

The ProTechnics Division



ProTechnics, a Core Laboratories Production Enhancement Division, provides tracers, completion imaging, and EOR evaluation in virtually every major producing basin of the world and is dedicated to providing the energy industry with state-of-the-art completion diagnostic services designed to maximize oil and gas recovery and to enhance production.

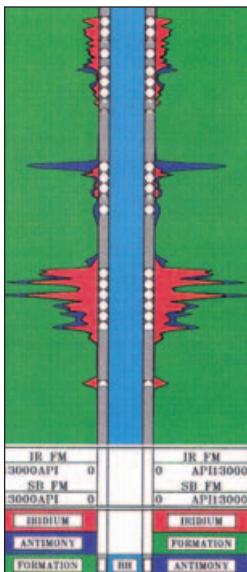
ProTechnics also maintains a chemical laboratory to formulate and analyze its proprietary tracers.

Additionally, our regulatory compliance department interacts with the Nuclear Regulatory Commission and other regulatory agencies to ensure compliance with all applicable safety and environmental regulations. ProTechnics' Radiation Consulting group provides consulting services and nuclear handling training for major companies.

Zero Wash Tracers

Proper fluid and proppant placement is paramount to a successful fracture stimulation treatment. Patented Zero Wash[®] tracers enable you to identify proppant distribution with precision, and they provide you with quantitative analysis of the fracture geometry. The Zero Wash tracer is an intermediate-strength ceramic proppant which has a specific isotope embedded in its particle matrix. This unique product eliminates "wash-off" and

residual contamination properties. Zero Wash tracers are available in multiple isotopes, various mesh sizes, and specific gravities.



SpectraFlood Interwell Tracers

ProTechnics interwell chemical tracer tests are used to confirm a field's directional heterogeneity or flow paths. From SpectraFlood[™] tracer studies, reservoir and production engineers can make informed decisions about field recovery improvements for waterflood and enhanced recovery projects.

ProTechnics can design, inject, and analyze your interwell flood tracing program to:

- Identify directional heterogeneity.
- Evaluate sweep efficiency and enhance ultimate recovery.
- Pinpoint fluid breakthrough paths.
- Identify multiple porosity-permeability systems and their respective fractional volumes.
- Gather design parameters during a pilot flood.
- Evaluate the effectiveness, or aid in the design, of conformance control.
- Evaluate early water breakthrough.
- Improve design for anticipated tertiary recovery projects.
- Locate thief zones caused by channeling and fractures.



SpectraScan Logging

ProTechnics' patented SpectraScan[®] spectral gamma ray logging technology provides the most complete post-frac wellbore image available. The SpectraScan tool is run as a self-contained memory service and can be deployed via slickline, electric wireline, washpipe, or coiled tubing.

Completion Profiler Logging

The Completion Profiler® service provides detailed information on completion placement and effectiveness for your hydraulic fracturing and acidizing treatments. It lets you confirm completion placement, as well as measure the flow rate and fluid properties from each set of contributing perforations – all in one trip.

PackScan Density Image

The PackScan™ Density Image is a new generation memory density log specifically designed to evaluate the competency of annular packs in offshore frac-pack operations in radioactively traced environments. Frac-pack operations can now be evaluated for both formation proppant placement and annular pack competency from the convenience of a washpipe deployment. The PackScan Imager can also be run via slickline, electric wireline, or coiled tubing as a stand-alone service, or it can be run in conjunction with SpectraScan Imager.

SpectraChem Tracers

With ProTechnics' patented SpectraChem™ family of chemical tracers, it is now possible to evaluate frac fluid performance and to characterize and assess zonal contribution in multi-zone wells.

When combined with SpectraScan and Completion Profiler logging services, SpectraChem tracers can provide valuable data regarding:

- Fracture fluid clean-up mechanisms
- Fracture fluid recovery efficiency
- Relative zonal clean-up contribution in multiple zones
- Relative zonal flow capacity
- Breaker efficiency
- Flow through bridge plug efficiency

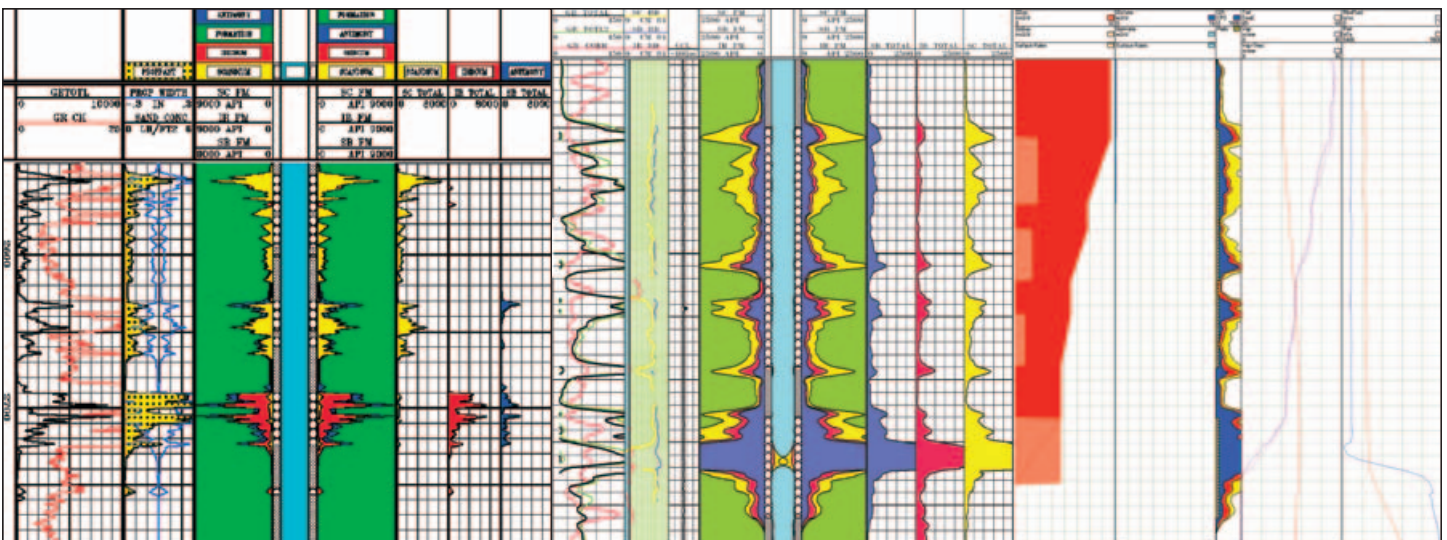
SpectraMark Services

In many completions, precise depth correlation will ensure safety, increased reliability, and reduced costs. Whether correlating flush-joint casing or non-magnetic tubulars, through multiple strings or casing or expected collar noise caused by age or corrosion, an economical solution utilizing radioactive markers can mean the difference between guesswork and reliable correlation. ProTechnics, the worldwide leader in oilfield radioisotope technologies, can provide you with precise correlation through our SpectraMark® Services.

Our SpectraTek™ Services operation in Albuquerque, New Mexico, packages and ships radioactive isotopes to ProTechnics, as well as other oilfield service companies around the world.

For More Information

For a complete overview of our products and services, visit our website at www.corelab.com



Zero Wash tracers, SpectraScan logging, and the Completion Profiler service allow ProTechnics to offer a total analysis of your completion effectiveness.



www.corelab.com

© 2002, 2005 Core Laboratories

Zero Wash, SpectraFlood, SpectraScan, Completion Profiler, SpectraChem, SpectraTek, and SpectraMark are trademarks of Core Laboratories.