

Bolt on Gun Centralizer

CN-020

MAN-CN-020 (R01)

OWEN OIL TOOLS

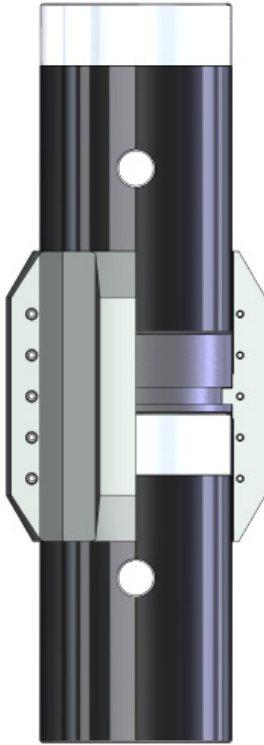
12001 Cr 1000
Godley, Texas, 76044, USA
Phone: +1 (817) 551-0540
Fax: +1 (817) 551-1674
www.corelab.com/owen

Warning: use of owen equipment contrary to manufacturer's specifications or operating instructions may result in property damage, serious injury or fatality. If you are not trained in the handling and use of explosive devices, do not attempt to use or assemble any owen perforating systems or owen firing devices.

This technology is regulated by and, if exported, was exported from the united states in accordance with the export administration regulations (EAR). Diversion contrary to U.S. Law is prohibited. Export and/or re-export of this technology may require issuance of a license by the bureau of industry and security (BIS), U.S. Department of Commerce. Consult the BIS, the EAR, and/or Owen Compliance Services, Inc. To determine licensing requirements for export or re-export of this technology.

This document contains confidential information of Owen Oil Tools LP (Owen) and is furnished to the customer for information purposes only. This document must not be reproduced in any way whatsoever, in part or in whole, or distributed outside the customer organization, without first obtaining the express written authorization of owen. This document is the property of owen and returnable upon request of Owen.

TECHNICAL INFORMATION:



The Bolt on Gun Centralizer is used to centralize a gun system within a casing string. The use of a clam shell style allows the centralizer to be installed after the gun connection has been made leaving the landing plate groove available during make up. As well, the clam shell style allows for a longer length centralizer which can be a larger OD and can accommodate larger casing ID's.

ADVANTAGES:

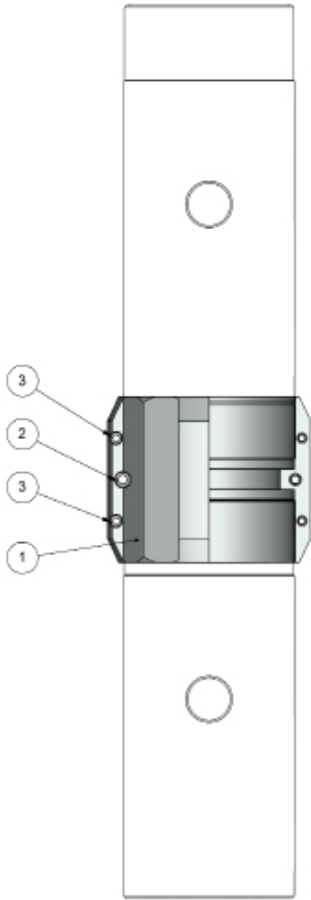
- Centralize gun system in casing
- Installed after gun connection is made
- Utilizes landing plate groove to lock onto standard TCP tandem sub
- Milled flats allow fluids to pass by centralizer
- Available in 5-1/8in (130.1 mm), 5-1/2in (139.7 mm) and 7in (177.8 mm) sizes

SPECIFICATIONS:

PART NUMBER	CN-020-5125-001		CN-020-5125-010		CN-020-5500-001	
O.D.	6.116 in	155.3 mm	9.448 in	240.0 mm	6.515 in	165.5 mm
Gun Size	5.125 in	130.1 mm	5.125 in	130.1 mm	5.500 in	139.7 mm
Rec. Casing Size	7 in	177.8 mm	10.750 in	273.1 mm	7.625 in	193.7 mm
	17-23 lb/ft	25-34 kg/m	33-56 lb/ft	49-83 kg/m	20-34 lb/ft	30-50 kg/m

PART NUMBER	CN-020-7000-001		CN-020-7000-010		CN-020-7000-011	
O.D.	11.963 in	303.8 mm	8.254 in	209.7 mm	9.448 in	240.0 mm
Gun Size	7 in	177.8 mm	7 in	177.8 mm	7 in	177.8 mm
Rec. Casing Size	13.375 in	339.7 mm	9.625 in	244.5 mm	10.750 in	273.1 mm
	48-77 lb/ft	71-115 kg/m	29-53 lb/ft	44-80 kg/m	33-56 lb/ft	49-83 kg/m

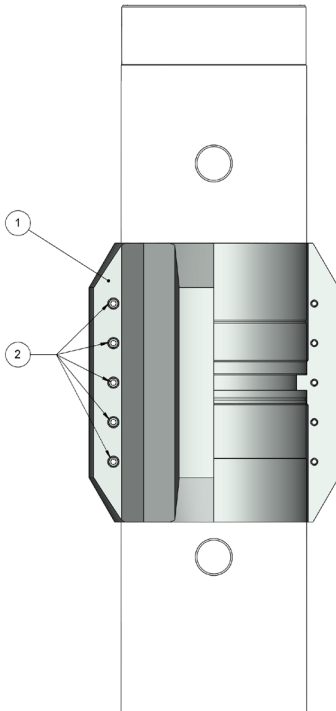
TECHNICAL INFORMATION:



BOM 5-1/8in – 5-1/2in BOLT ON GUN CENTRALIZERS

ITEM NO.	QTY.	PART NUMBER	DESCRIPTION
--	--	CN-020-5125-001	BOLT ON GUN CENTRALIZER, 5-1/8" GUN SYSTEM, 6.116" OD
1	2	CN-020-0000-513	HALF CENTRALIZER
2	2	PUR-0500-057	SOCKET HEAD SCREW, 5/16-18UN X 1" LG
3	4	PUR-0500-042	SOCKET HEAD SCREW, 1/4-20UN X 1" LG

ITEM NO.	QTY.	PART NUMBER	DESCRIPTION
--	--	CN-020-5500-001	BOLT ON GUN CENTRALIZER, 5-1/2" GUN SYSTEM, 6.515" OD
1	2	CN-020-0000-550	HALF CENTRALIZER
2	2	PUR-0500-057	SOCKET HEAD SCREW, 5/16-18UN X 1" LG
3	4	PUR-0500-042	SOCKET HEAD SCREW, 1/4-20UN X 1" LG



BOM 7in BOLT ON GUN CENTRALIZERS

ITEM NO.	QTY.	PART NUMBER	DESCRIPTION
--	--	CN-020-7000-001	BOLT ON GUN CENTRALIZER, 7" GUN SYSTEM, 11.963" OD
1	2	CN-020-0000-700	HALF CENTRALIZER
2	8	PUR-0504-062	SOCKET HEAD CAP SCREW, 1/2-13UN X 1-1/4" LG

ITEM NO.	QTY.	PART NUMBER	DESCRIPTION
--	--	CN-020-7000-010	BOLT ON GUN CENTRALIZER, 7" GUN SYSTEM, 8.254" OD
1	2	CN-020-0001-700	HALF CENTRALIZER
2	10	PUR-0500-045	SOCKET HEAD SCREW, 1/4-20UN X 1-1/8" LG

ITEM NO.	QTY.	PART NUMBER	DESCRIPTION
--	--	CN-020-7000-011	BOLT ON GUN CENTRALIZER, 7" GUN SYSTEM, 9.448" OD
1	2	CN-020-0001-700	HALF CENTRALIZER
2	10	PUR-0500-045	SOCKET HEAD SCREW, 1/4-20UN X 1-1/8" LG

ASSEMBLY

1.0 Pre-Assembly



Note: Before assembly, visually inspect all components for any defects.

2.0 Assembly

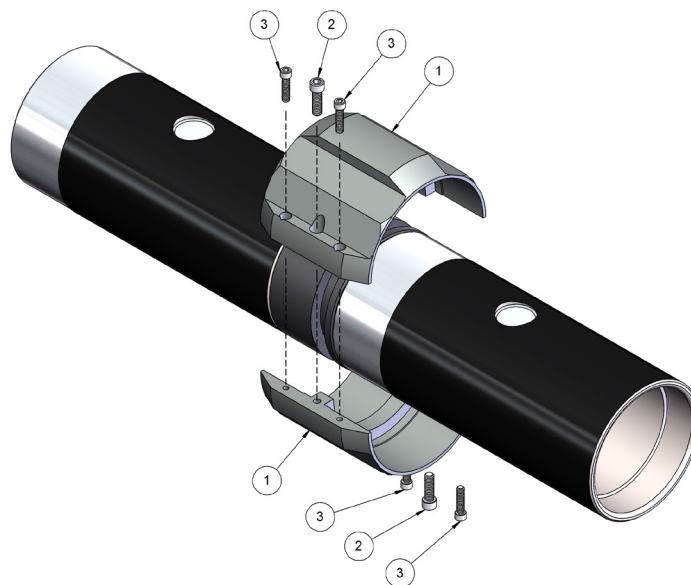
- 2.1 After the gun connection has been made to the tandem sub remove the landing plate from the tandem sub landing plate groove.
- 2.2 Place the two half centralizers (Items #1) around the tandem sub ensuring the lip in the centralizer engages the landing plate groove of the sub.



Note: Before assembly, visually inspect all components for any defects.

5-1/8" and 5-1/2" Centralizers

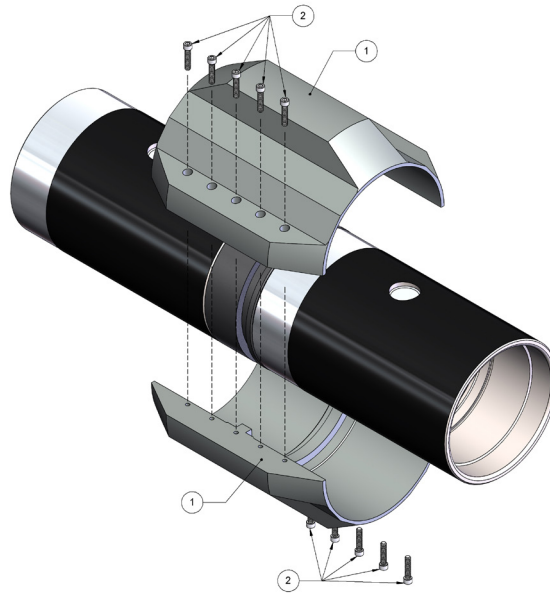
- 2.3 Thread the cap screws (Items #2) and (Items #3) into the appropriate holes. Torque the screws as specified:



PART NUMBER	DESCRIPTION	TORQUE	
PUR-0500-042	SOCKET HEAD SCREW, 1/4-20UN X 1" LG	10 ft-lb	14 N-m
PUR-0500-057	SOCKET HEAD SCREW, 5/16-18UN X 1" LG	18 ft-lb	24 N-m

7" Centralizer

2.4 Thread the cap screws (Items #2) into each hole. Torque the screws as specified:



PART NUMBER	DESCRIPTION	TORQUE	
PUR-0504-062	SOCKET HEAD CAP SCREW, 1/2-13UN X 1-1/4" LG	70 ft-lb	95 N-m
PUR-0500-045	SOCKET HEAD SCREW, 1/4-20UN X 1-1/8" LG	10 ft-lb	14 N-m