



X-SPAN™ Accessories

MAN-PAT-025 (R01)

Owen Oil Tools LP

12001 CR 1000

Godley, Texas, 76044, USA

Phone: +1 (817) 551-0540

Fax: +1 (817) 551-1674

www.corelab.com/owen

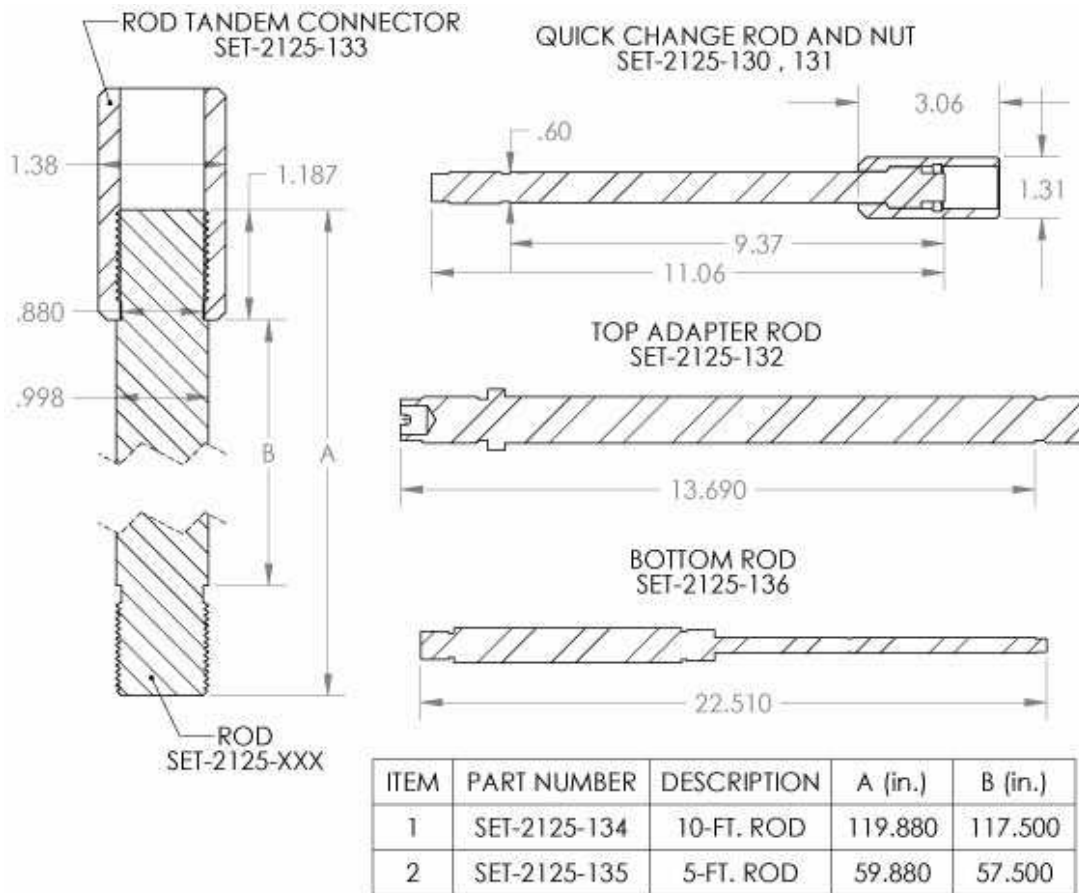
Warning: Use of Owen equipment contrary to manufacturer's specifications or operating instructions may result in property damage, serious injury or fatality. If you are not trained in the handling and use of explosive devices, do not attempt to use or assemble any Owen perforating systems or Owen firing devices.

This technology is regulated by and, if exported, was exported from the United States in accordance with the Export Administration Regulations (EAR). Diversion contrary to U.S. law is prohibited. Export and/or re-export of this technology may require issuance of a license by the Bureau of Industry and Security (BIS), U.S. Department of Commerce. Consult the BIS, the EAR, and/or Owen Compliance Services, Inc. to determine licensing requirements for export or re-export of this technology.

This document contains Confidential Information of Owen Oil Tools LP (Owen) and is furnished to the customer for information purposes only. This document must not be reproduced in any way whatsoever, in part or in whole, or distributed outside the customer organization, without first obtaining the express written authorization of Owen. This document is the property of Owen and returnable upon request of Owen.

© 2009 Owen Oil Tools

1 inch Rods

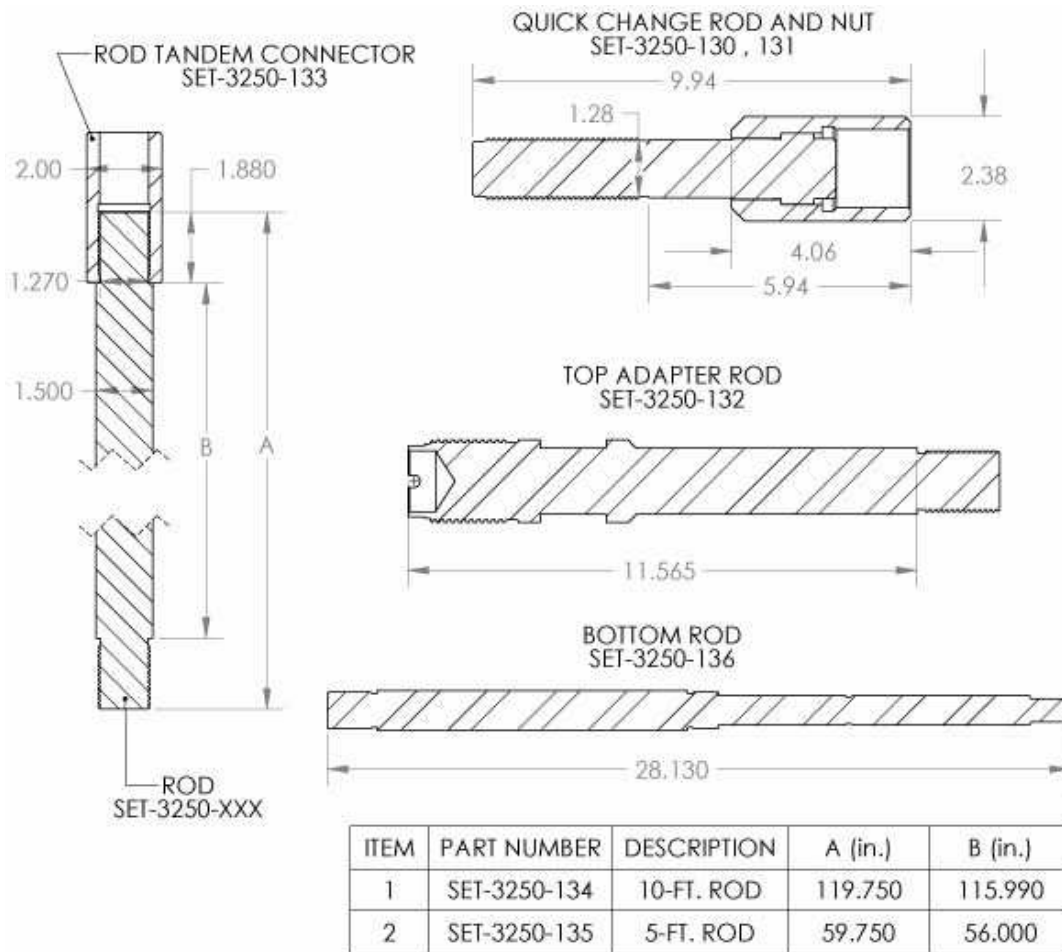


MAXIMUM PULL 58,900 LB. (BASE ON .60 DIA THREAD RELF.)

To check for cracks or defects, after each job it is highly recommended to give each Rod a full visual inspection after each run and the connections a Magnetic Particle Inspection (MPI) after 10 runs.

Each Rod should have it's own serial number so that history and inspection tracking can be done to each individual Rod. This tracking will help protect against failures. For Rod Supports, refer to the patch diagram in the product manual.

1-1/2 inch Rods

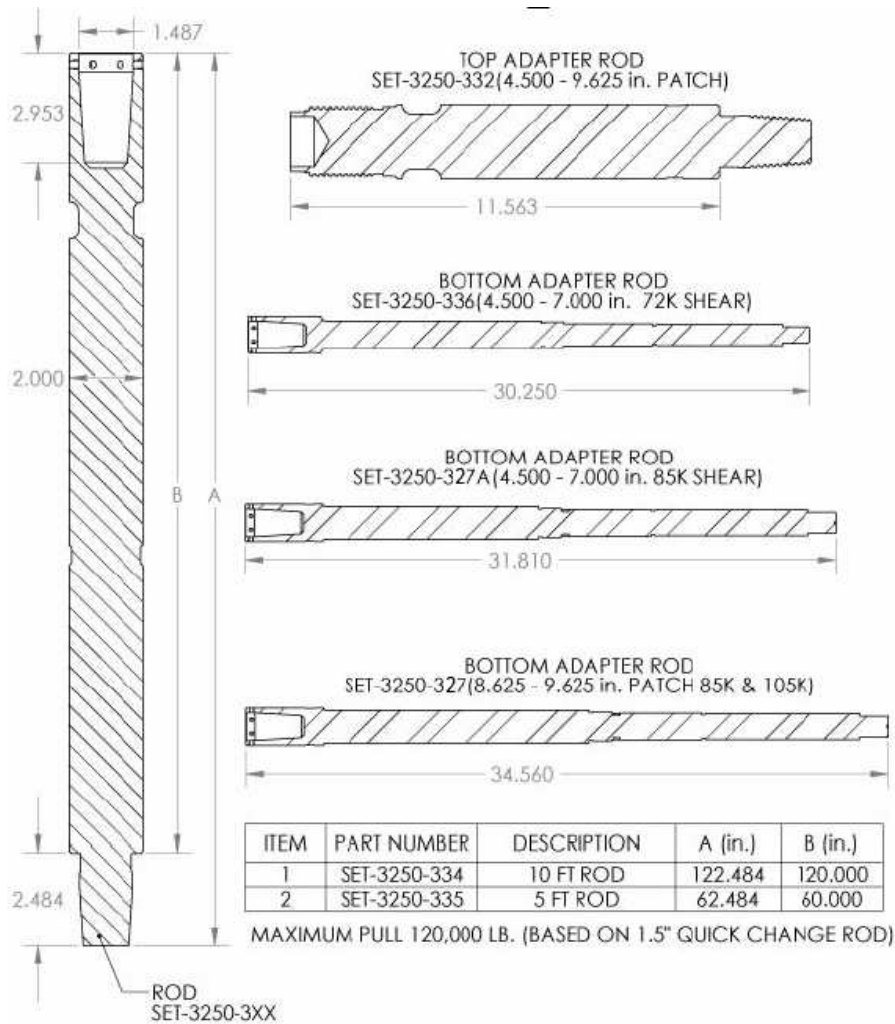


MAXIMUM PULL 120,000 LB. (BASE ON 1.28 DIA THREAD RELF)

To check for cracks or defects, after each job it is highly recommended to give each Rod a full visual inspection after each run and the connections a Magnetic Particle Inspection (MPI) after 10 runs.

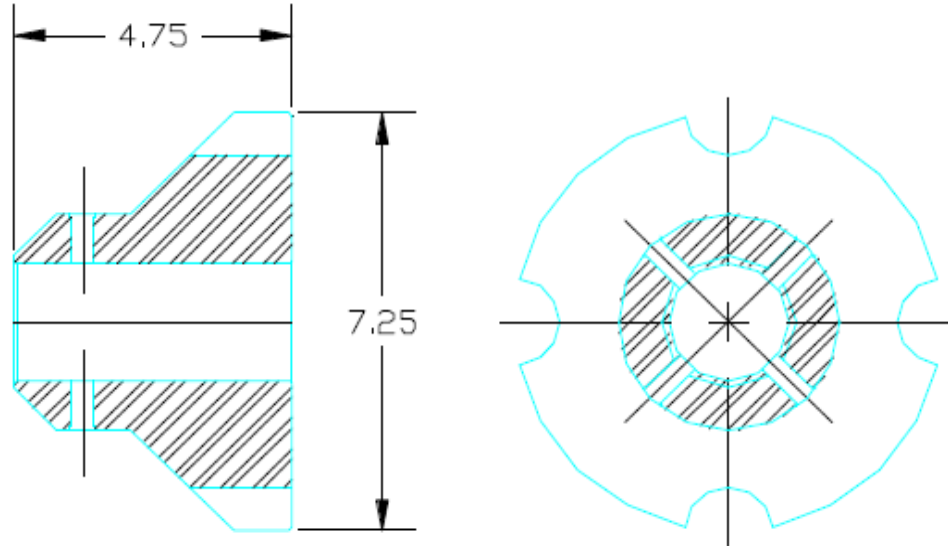
Each Rod should have it's own serial number so that history and inspection tracking can be done to each individual Rod. This tracking will help protect against failures. For Rod Supports, refer to the patch Diagram in the product manual.

2 inch Rods and Connecting Rods

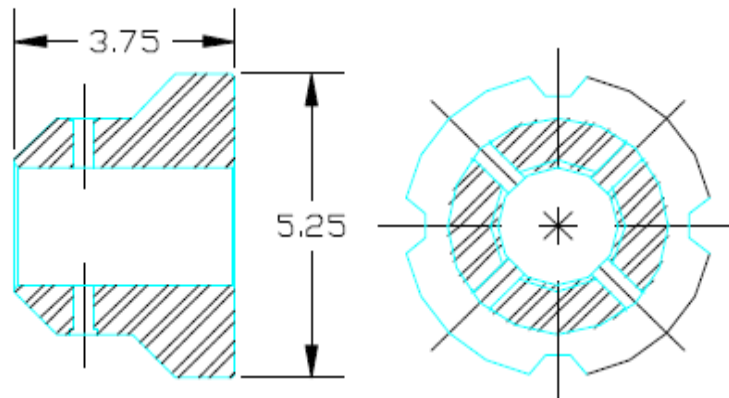


Making up- When making up 2 in Rods to each other or to Top and Bottom Adapters, it is not necessary to excessively torque. To avoid the possibility of the connection backing off, we have incorporated 3 Set Screws (1/4 in-20x1/4 in) in the box-end connection. When making up, apply Blue Loctite to the connections. Once connections shoulders up, bump connection and install at least 1 Set Screw. To check for cracks or defects, after each job it is highly recommended to give each Rod a full visual inspection after each run and the connections a Magnetic Particle Inspection (MPI) after 10 runs. If you are purchasing these Rods, it would be wise to have a 1/4 in-20 Tap for cleaning out the Set Screw threads. Each Rod should have it's own serial number so that history and inspection tracking can be done to each individual Rod. This tracking will help protect against failures.

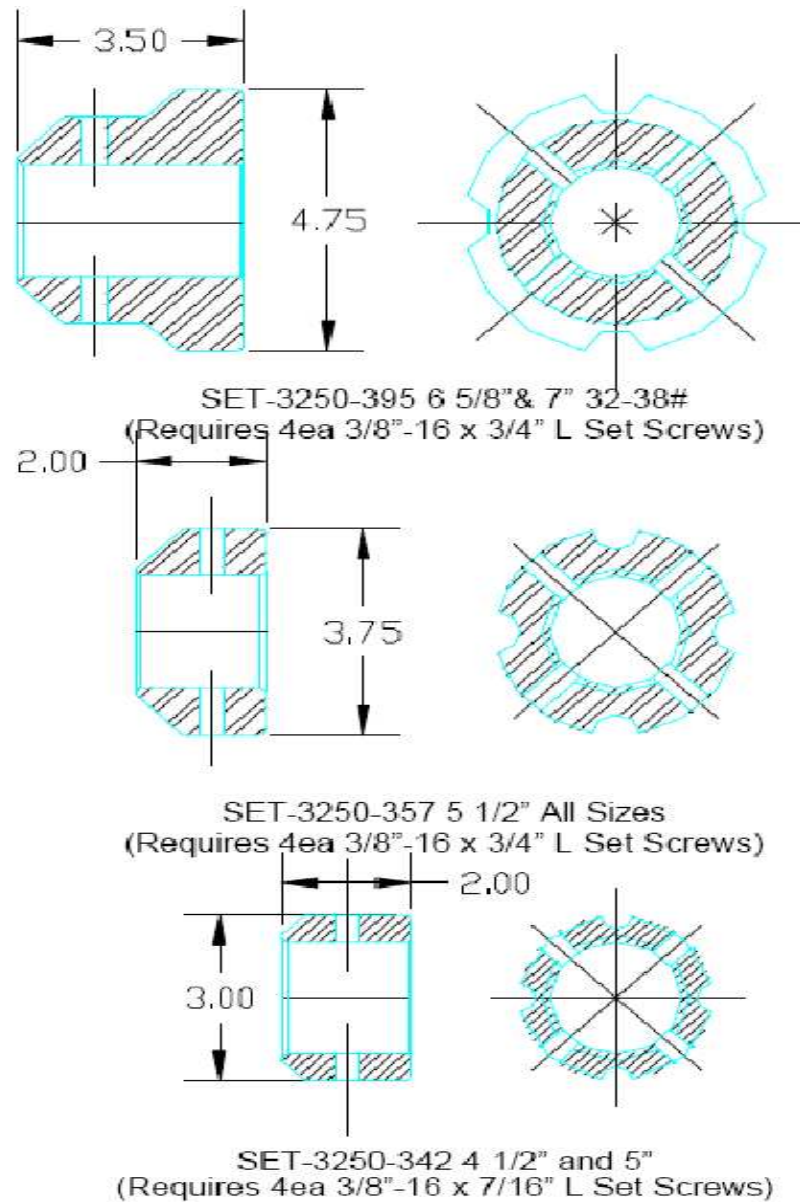
Optional Rod Supports for 2 inch Rods



SET-3250-328 9 5/8" All Sizes
(Requires 4ea 3/8"-16 x 3/4" L Set Screws)

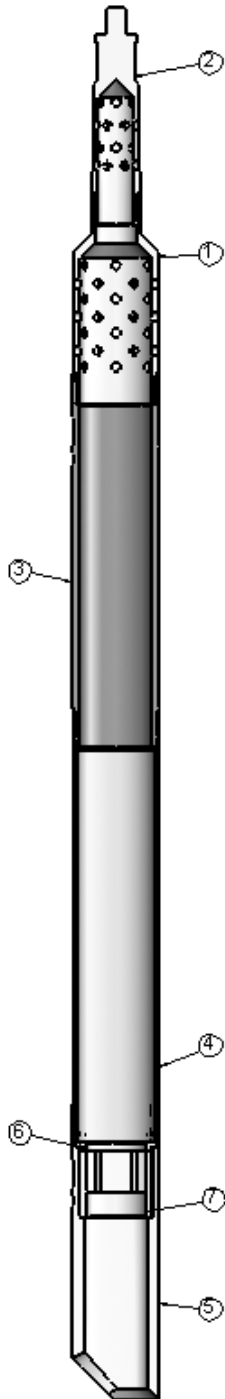


SET-3250-396 For 7" 17-29# & 7 5/8" 39#
(Requires 4ea 3/8"-16 x 3/4" L Set Screws)



Installation- Slide the Rod Supports, with the widest part facing towards the Pin-end connection, over the 2 in Rods to the stencil groove. The Rod Support is held in place by screwing the Set Screws into the stencil groove.

Dual Gauge Ring and JB Assembly



ITEM	SIZE	Qty	2-7/8		3-1/2	
	WEIGHT		6.4-6.5#		9.2-9.3#	
	DRIFT DIA (INCHES)		2.255	2.817	2.78	2.725
	DIFT ASSEMBLY		DDG-2875-0065-1001	DDG-3500-0093-1001	DDG-3500-0093-1002	DDG-3500-0093-1003
1	CROSS OVER	1	N/A	DDG-3500-0093-1201	N/A	
2	TOP CONNECTION	1	DDG-2125-MSST-1101	DDG-2125-MSST-1101	DDG-2688-MSST-1101	DDG-2688-MSST-1101
3	TOP GAUGE RING	1	DDG-2875-0065-1101	DDG-3500-0093-1101	DDG-3500-0093-1102	DDG-3500-0093-1103
4	SECTION	1	PAT-2875-0065-1_	PAT-3500-0093-1_	SPC-3500-0_	PAT-3500-057
5	BOTTOM GAUGE RING	1	DDG-2875-0065-1301	DDG-3500-0093-1301	DDG-3500-0093-1302	DDG-3500-0093-1303
6	SPACER	1	DDG-2875-0065-1601	DDG-3500-0093-1601		DDG-3500-0093-1603
7	CAGE ASSEMBLY	1	TT0321-255A	TT0321-263A		
ITEM	SIZE	Qty	4-1/2			
	WEIGHT		9.5-10.5#		11.6-12.6#	
	DRIFT DIA (INCHES)		2.880		3.781	
	DIFT ASSEMBLY		DDG-4500-0105-1001	DDG-4500-0126-1001	DDG-4500-0135-1001	DDG-4500-0135-1002
1	CROSS OVER		N/A			
2	TOP CONNECTION	1	DDG-2688-MSST-1101			
3	TOP GAUGE RING	1	DDG-4500-0105-1101	DDG-4500-0126-1101	DDG-4500-0135-1101	DDG-4500-0135-1102
4	SECTION	1	PAT-4500-037		GTX-4500-1_	
5	BOTTOM GAUGE RING	1	DDG-4500-0105-1301	DDG-4500-0126-1301	DDG-4500-0135-1301	DDG-4500-0135-1302
6	SPACER	1	DDG-4500-0105-1601			DDG-4500-0135-1601
7	CAGE ASSEMBLY	1	TT0329-312A			
ITEM	SIZE	Qty	4-1/2	5-1/2		7
	WEIGHT		13.5#	15.5#	17#	17#
	DRIFT DIA (INCHES)		3.663	4.795	4.705	6.360
	DIFT ASSEMBLY		DDG-4500-0135-1003	DDG-5500-0155-1001	DDG-5500-0170-1001	DDG-7000-0170-1001
1	CROSS OVER	1	N/A	DDG-5500-0155-1601		
2	TOP CONNECTION	1	DDG-2688-MSST-1101			
3	TOP GAUGE RING	1	DDG-4500-0135-1103	DDG-5500-0155-1101	DDG-5500-0170-1101	DDG-7000-0170-1101
4	SECTION	1	GTX-4500-1_	PAT-5500-057	PAT-5500-037	PAT-7000-087
5	BOTTOM GAUGE RING	1	DDG-4500-0135-1303	DDG-5500-0155-1301	DDG-5500-0170-1301	DDG-7000-0170-1301
6	SPACER	1	DDG-4500-0135-1601	DDG-5500-0155-1601	DDG-5500-0170-1601	DDG-7000-0170-1601
7	CAGE ASSEMBLY	1	TT0329-312A	TT0392-400A	TT0392-480A	
ITEM	SIZE	Qty	7			
	WEIGHT		20#		23#	
	DRIFT DIA (INCHES)		6.286		6.165	
	DIFT ASSEMBLY		DDG-7000-0200-1001		DDG-7000-0230-1001	
1	CROSS OVER	1	DDG-5500-0155-1601			
2	TOP CONNECTION	1	DDG-2688-MSST-1101			
3	TOP GAUGE RING	1	DDG-7000-0200-1101	DDG-7000-0230-1101		
4	SECTION	1	PAT-4500-037			
5	BOTTOM GAUGE RING	1	DDG-7000-0200-1301	DDG-7000-0230-1301		
6	SPACER	1	DDG-7000-0170-1601			
7	CAGE ASSEMBLY	1	TT0329-312A			