

TECHNICAL INFORMATION:

GTX-4500-0126-1001, 4.5 INCH 12.6 PPF



CASING O.D. (in)	4.5
CASING WT. (lb/ft)	12.6
CASING I.D. (in)	3.958
PATCH MAX. RUNNING O.D. (in)	3.800
PATCH I.D. AFTER SETTING (in)	2.992
PATCH DRIFT I.D. (in)	2.867
BURST HYDRAULIC RATING (psi)	7800
COLLAPSE HYDRAULIC RATING (psi)	7800
BURST GAS RATING (psi)	7800
COLLAPSE COLLAPSE RATING (psi)	7800

QTY.	DESCRIPTION	PART NUMBER	MATERIAL
	GTX-SPAN SYSTEM	GTX-4500-0126-1001	NOTED
4	ELASTOMER	GTX-4500-0126-6000	HSN
1	PIN ELEMENT	GTX-4500-0126-1210	4140
1	BOX ELEMENT	GTX-4500-0126-1410	4140
1	TOP SWAGE	GTX-4500-0126-1110	4140 / 4142
1	BOTTOM SWAGE	GTX-4500-0126-1310	4140 / 4142
1	O-RING	OOO-V569-152	VITON
1	O-RING	OOO-V569-151	VITON
1	60K SHEAR RING	PAT-4500-760	4140 / 4142
1	10 FT. SECTION	GTX-4500-110	L-80
-		GTX-4500-110C	13 Cr
-	5FT SECTION	GTX-4500-105	L-80
-		GTX-4500-105C	13 Cr
-	20 FT SECTION	GTX-4500-120	L-80
-		GTX-4500-120C	13 Cr

MINIMUM EQUIPMENT REQUIRED FOR A FULL SYSTEM CONSISTS OF ONE SHORT ASSEMBLY AND ONE SECTION.

PRODUCT OFFERINGS:

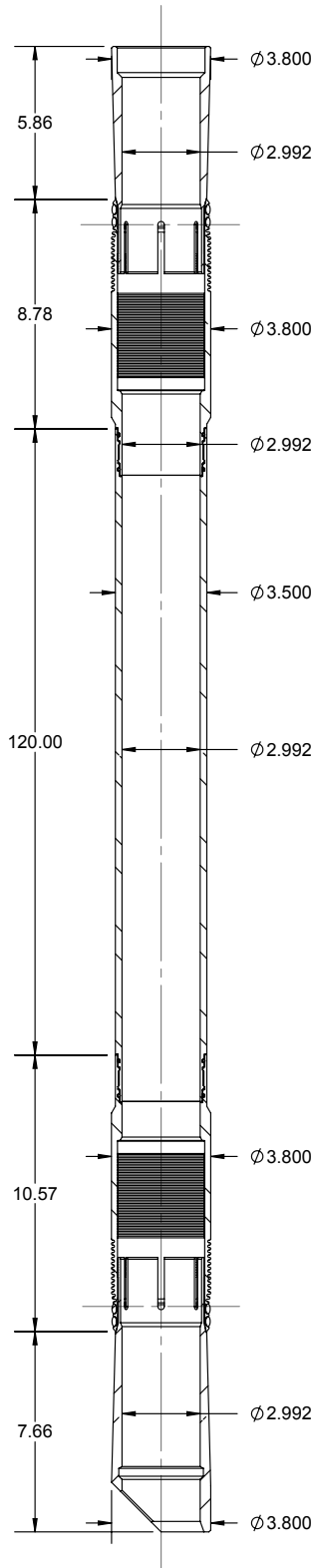
GTX-SPAN provides a gas tight system to the industry which is effective, reliable, and economical. The system is durable and dependable as an isolation method of perforations, splits, corrossions or leaks in most types of tubulars. This system as well as our current X-SPAN® System can be designed using premium alloys for extreme well bore environments and custom sized for most tubing restrictions.

BENEFITS/CAPABILITIES:

- Economical and reliable solution for water shut-off / zonal isolation
- Large bore assures easy passage of service tools
- Minimal surface equipment and one trip system results in savings
- Well interventions may be performed on flowing or static wells
- Easily deployed using a range of pyrotechnic multistage or hydraulic setting tools

**TECHNICAL
INFORMATION:**

GTX-4500-0126-1001, 4.5 INCH 12.6 PPF



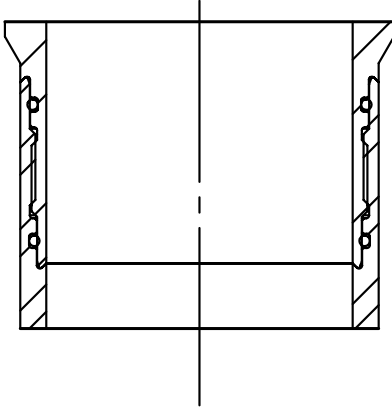
CASING O.D. (in)	4.5
CASING WT. (lb/ft)	12.6
CASING I.D. (in)	3.958
PATCH MAX. RUNNING O.D. (in)	3.800
PATCH I.D. AFTER SETTING (in)	2.992
PATCH DRIFT I.D. (in)	2.867
BURST HYDRAULIC RATING (psi)	7800
COLLAPSE HYDRAULIC RATING (psi)	7800
BURST GAS RATING (psi)	7800
COLLAPSE COLLAPSE RATING (psi)	7800

QTY.	DESCRIPTION	PART NUMBER	MATERIAL
4	ELASTOMER	GTX-4500-0126-6000	HSN
1	PIN ELEMENT	GTX-4500-0126-1210	4140
1	BOX ELEMENT	GTX-4500-0126-1410	4140
1	TOP SWAGE	GTX-4500-0126-1110	4140 / 4142
1	BOTTOM SWAGE	GTX-4500-0126-1310	4140 / 4142
N+1	O-RING	OOO-V569-151	VITON
N+1	O-RING	OOO-V569-152	VITON
1	60K SHEAR RING	PAT-4500-760	4140 / 4142
1	SET SCREW 1/4 INCH X 20 TPI, 5/16 INCH	PUR-0501-030	ALLOY
N	10 FT. SECTION	GTX-4500-110	L-80
1	SLEEVE NUT	SET-3250-120	4130 / 4140
1	SLEEVE LOCK NUT	SET-3250-121	4130 / 4140
1	SETTING SLEEVE ASSEMBLY	SET-3250-122	NOTED
1	QUICK CHANGE ROD	SET-3250-130	4130 / 4140
1	QUICK CHANGE NUT	SET-3250-131	4130 / 4140
1	TOP ADAPTER ROD	SET-3250-132	4130 / 4140
N+1	ROD TANDEM CONNECTOR	SET-3250-133	4130 / 4140
N	10 FT. ROD	SET-3250-134	4130 / 4140
OPT.	5 FT. ROD	SET-3250-135	4130 / 4140
1	BOTTOM ROD EXTENDED	SET-3250-136L	4130 / 4140
1	COLLET ASSEMBLY	SET-3250-747	SEE TABLE
	END SUB	SET-3250-745	4130 / 4140 / 4142
	COLLET	SET-3250-746	4130 / 4140 / 4142
1	COLLET SUPPORT	SET-3250-446	4140 / 4142
N	ROD SUPPORT	SET-3250-142A	ALUMINIUM

MINIMUM EQUIPMENT REQUIRED FOR 10 FT. SYSTEM

EXTENSION SPECIFICATIONS:

GTX-4500-0126-1001, 4.5 INCH 12.6 PPF



PART NUMBER	LENGTH	OAL	WEIGHT	MATERIAL
GTX-4500-102	24	25.82	17.22	L-80
GTX-4500-102C	24	25.82	17.22	13 Cr
GTX-4500-105	60	61.82	43.16	L-80
GTX-4500-105C	60	61.82	43.16	13 Cr
GTX-4500-110	120	121.82	86.4	L-80
GTX-4500-110C	120	121.82	86.4	13 Cr
GTX-4500-120	240	241.82	172.86	L-80
GTX-4500-120C	240	241.82	172.86	13 Cr

PATCH TENSILE RATING	63,000 LBF
----------------------	------------

SYSTEM WEIGHTS

	WEIGHT (LBS.)
GTX-4500-0126-1001	28
10 FT PATCH RUNNING WEIGHT	221.2
EA. ADDITIONAL 10 FT. LGTH ADD	148

SETTING TOOL OPTIONS:

HYDRAULIC			WEIGHT (LBS)
3-1/8 INCH HYDARULIC	SET-3125-010		300
3-1/4 INCH MULTISTAGE SETTING TOOL INTERNALLY STROKED (HYDRAULIC)	SET-3250-410		287
	SCREEN SUB	TT0798-288A	
	CIRCULATION SUB	SET-2875-010	
	DUMP SUB	OT0710-288B-000	

PYROTECHNIC			WEIGHT (LBS)
3-1/4 INCH MULTISTAGE SETTING TOOL	SET-3250-000		206
3-1/4 INCH MULTISTAGE SETTING TOOL INTERNALLY STROKED	SET-3250-400		200
	POWER CHARGE	OPC-3250-000-MS	
	IGNITER	DET-5306-074	