

**TECHNICAL  
INFORMATION:**

## GTX-5500-0200-3002, 5.5 INCH 20 PPF



CASING O.D. (in)	5.500
CASING WT. (lb/ft)	20
CASING I.D. (in)	4.778
PATCH MAX. RUNNING O.D. (in)	4.500
PATCH I.D. AFTER SETTING (in)	3.810
PATCH DRIFT I.D. (in)	3.685
BURST HYDRAULIC RATING (psi)	7500
COLLAPSE HYDRAULIC RATING (psi)	5000
BURST GAS RATING (psi)	7500
COLLAPSE COLLAPSE RATING (psi)	5000

QTY.	DESCRIPTION	PART NUMBER	MATERIAL
1	GTX-SPAN SYSTEM	GTX-5500-0200-3002	NOTED
4	ELASTOMER	GTX-5500-0230-6000	HSN
1	PIN ELEMENT	GTX-5500-0200-3211	13 Cr
1	BOX ELEMENT	GTX-5500-0200-3411	13 Cr
1	TOP SWAGE	GTX-5500-0200-3111	SUPER / HYPER CHROME
1	BOTTOM SWAGE	GTX-5500-0200-3311	SUPER / HYPER CHROME
1	O-RING	OOO-V569-155	VITON
1	O-RING	OOO-V569-156	VITON
1	72K SHEAR STUD	PAT-4500-038	4140 / 4142
1	10 FT. SECTION	GTX-5500-0155-3010	13 Cr
	5 FT. SECTION	GTX-5500-0155-3005	13 Cr

MINIMUM EQUIPMENT REQUIRED FOR A FULL SYSTEM CONSISTS OF ONE SHORT ASSEMBLY AND ONE SECTION.

### PRODUCT OFFERINGS:

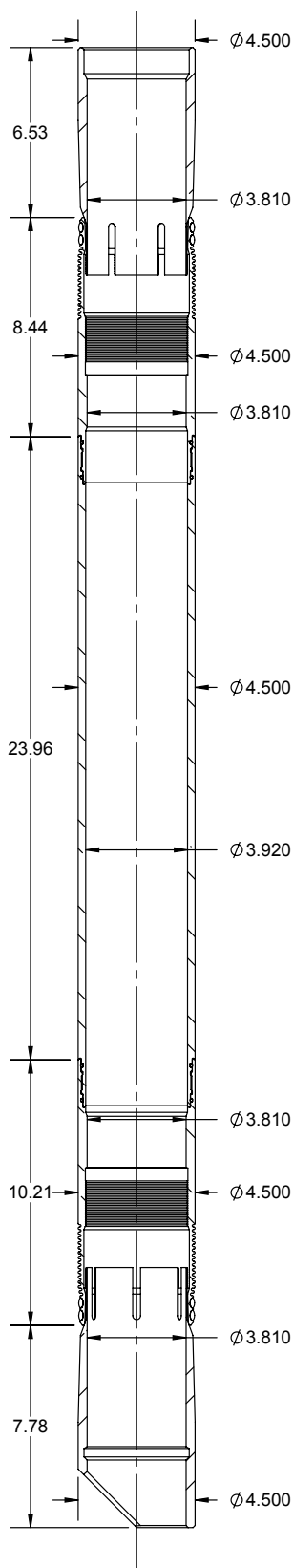
GTX-SPAN provides a gas tight system to the industry which is effective, reliable, and economical. The system is durable and dependable as an isolation method of perforations, splits, corrossions or leaks in most types of tubulars. This system as well as our current X-SPAN<sup>®</sup> System can be designed using premium alloys for extreme well bore environments and custom sized for most tubing restrictions.

### BENEFITS/CAPABILITIES:

- Economical and reliable solution for water shut-off / zonal isolation
- Large bore assures easy passage of service tools
- Minimal surface equipment and one trip system results in savings
- Well interventions may be performed on flowing or static wells
- Easily deployed using a range of pyrotechnic multistage or hydraulic setting tools

**TECHNICAL INFORMATION:**

## GTX-5500-0200-3002, 5.5 INCH 20 PPF



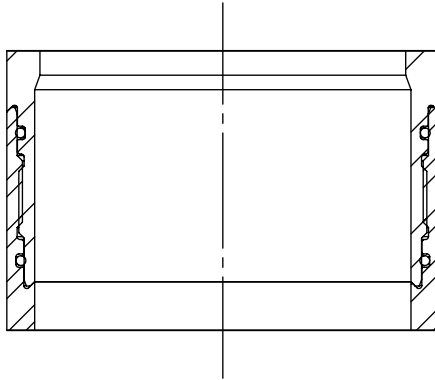
CASING O.D. (in)	5.500
CASING WT. (lb/ft)	20
CASING I.D. (in)	4.778
PATCH MAX. RUNNING O.D. (in)	4.500
PATCH I.D. AFTER SETTING (in)	3.810
PATCH DRIFT I.D. (in)	3.685
BURST HYDRAULIC RATING (psi)	7500
COLLAPSE HYDRAULIC RATING (psi)	5000
BURST GAS RATING (psi)	7500
COLLAPSE COLLAPSE RATING (psi)	5000

QTY.	DESCRIPTION	PART NUMBER	MATERIAL
4	ELASTOMER	GTX-5500-0230-6000	HSN
1	PIN ELEMENT	GTX-5500-0200-3211	13 Cr
1	BOX ELEMENT	GTX-5500-0200-3411	13 Cr
1	TOP SWAGE	GTX-5500-0200-3111	SUPER / HYPER CHROME
1	BOTTOM SWAGE	GTX-5500-0200-3311	SUPER / HYPER CHROME
N+1	O-RING	OOO-V569-155	VITON
N+1	O-RING	OOO-V569-156	VITON
1	72K SHEAR STUD	PAT-4500-038	4140 / 4142
1	SET SCREW 1/4 INCH X 20 TPI, 5/16 INCH	PUR-0501-030	ALLOY
N	10 FT. SECTION	GTX-5500-0155-3010	13 Cr
1	SLEEVE NUT	SET-3250-120	4130 / 4140
1	SLEEVE LOCK NUT	SET-3250-121	4130 / 4140
1	SETTING SLEEVE ASSY	SET-3250-148	NOTED
1	QUICK CHANGE ROD	SET-3250-130	4130 / 4140
1	QUICK CHANGE NUT	SET-3250-131	4130 / 4140
1	LOCK NUT	SET-3500-025	1213 - 1215
1	TOP ADAPTER ROD	SET-3250-132	4130 / 4140
N+1	ROD TANDEM CONNECTOR	SET-3250-133	4130 / 4140
N	10 FT. ROD	SET-3250-134	4130 / 4140
OPT	5 FT. ROD	SET-3250-135	4130 / 4140
1	BOTTOM ROD EXTENDED	SET-3250-136L	4130 / 4140
1	COLLET ASSEMBLY	SET-3250-137B	NOTED
1	COLLET BODY	SET-3250-138B	4140 / 4142
1	END SUB	SET-3250-139B	4140 / 4142
1	COLLET SUPPORT	SET-3250-157C	4130 / 4140
N	ROD SUPPORT	SET-3250-142	ALUMINIUM

MINIMUM EQUIPMENT REQUIRED FOR 10 FT. SYSTEM

**EXTENSION SPECIFICATIONS:**

**GTX-5500-0200-3002, 5.5 INCH 20 PPF**



PART NUMBER	LENGTH (INCHES)	OAL (INCHES)	WEIGHT (LBS.)	MATERIAL
GTX-5500-0155-3005	60	61.82	64.0	13 Cr
GTX-5500-0155-3010	120	121.82	128.0	13 Cr

PATCH TENSILE RATING	104,000 LBF
----------------------	-------------

**SYSTEM WEIGHTS**

	WEIGHT (LBS.)
GTX-5500-0200-3002	34.6
10 FT PATCH RUNNING WEIGHT	288.1
EA. ADDITIONAL 10 FT. LGTH ADD	190

**SETTING TOOL OPTIONS:**

HYDRAULIC			WEIGHT (LBS)
4-1/2 INCH HYDRAULIC	SET-4500-010		880
3-1/8 INCH HYDRAULIC	SET-3125-010		300
3-1/4 INCH MULTISTAGE SETTING TOOL INTERNALLY STROKED (HYDRAULIC)	SET-3250-410		287
	SCREEN SUB	TT0798-288A	
	CIRCULATION SUB	SET-2875-010	

PYROTECHNIC			WEIGHT (LBS)
3-1/4 INCH MULTISTAGE SETTING TOOL	SET-3250-000		206
3-1/4 INCH MULTISTAGE SETTING TOOL INTERNALLY STROKED	SET-3250-400		200
	POWER CHARGE	OPC-3250-000-MS	
	IGNITER	DET-5306-074	
		DET-5306-008	