

TECHNICAL INFORMATION:

PAT-5000-002, 5.0 INCH 15 PPF



CASING O.D. (in)	5
CASING WT. (lb/ft)	15
CASING I.D. (in)	4.408
PATCH MAX. RUNNING O.D. (in)	4.188
PATCH I.D. AFTER SETTING (in)	3.500
PATCH DRIFT I.D. (in)	3.375
BURST HYDRAULIC RATING (psi)	6530
COLLAPSE HYDRAULIC RATING (psi)	6390

QTY.	DESCRIPTION	PART NUMBER	MATERIAL
	X-SPAN SYSTEM	PAT-5000-002	NOTED
1	PIN ELEMENT	PAT-5000-030	1026
1	BOX ELEMENT	PAT-5000-031	1026
1	TOP SWAGE	PAT-5000-034	4130 / 4140 / 4142
1	BOTTOM SWAGE	PAT-5000-035	4130 / 4140 / 4142
1	O-RING	OOO-V569-153	VITON
1	O-RING	OOO-V569-154	VITON
1	72K SHEAR STUD	PAT-4500-038	4140 / 4142
1	10 FT. SECTION	PAT-5000-037	1018 / 1026
	5 FT. SECTION	PAT-5000-038	1018 / 1026

MINIMUM EQUIPMENT REQUIRED FOR A FULL SYSTEM CONSISTS OF ONE SHORT ASSEMBLY AND ONE SECTION.

PRODUCT OFFERINGS:

The Owen X-SPAN® System is an economical, proven, durable and dependable sealing system for the isolation of perforations, splits, corrosion or leaks in all types of tubulars and conditions. This system can utilize a multitude of deployment methods in all types of well bores. The large bore assures easy passage of service tools including bridge plugs, drop balls, seal bore assemblies, logging tools and perforating systems. The minimal surface equipment required for deploying the patch and rig less intervention results in significant savings for the operator.

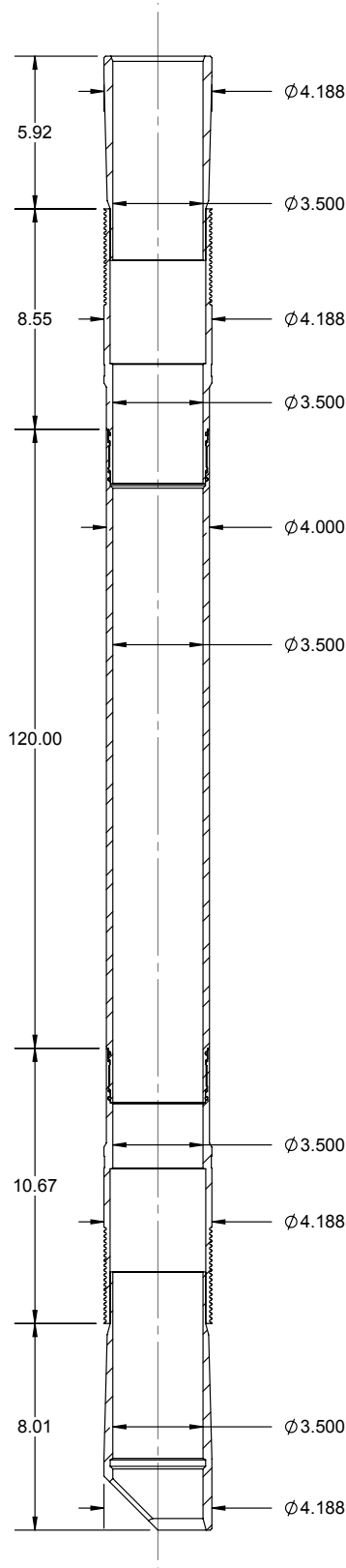
BENEFITS/CAPABILITIES:

The X-SPAN® System Offers:

- A proven, durable and dependable seal
- Deployment on electric wireline, tubing, drill pipe or coil tubing in vertical, deviated or horizontal or geothermal well bores
- An economical and reliable solution for a broad range of applications
- A large bore for easy passage of service tools
- Minimal surface equipment required for deployment

TECHNICAL INFORMATION:

PAT-5000-002, 5.0 INCH 15 PPF



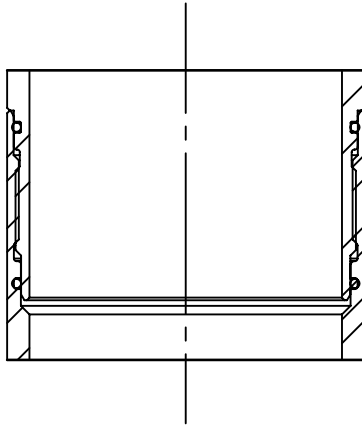
CASING O.D. (in)	5
CASING WT. (lb/ft)	15
CASING I.D. (in)	4.408
PATCH MAX. RUNNING O.D. (in)	4.188
PATCH I.D. AFTER SETTING (in)	3.500
PATCH DRIFT I.D. (in)	3.375
BURST HYDRAULIC RATING (psi)	6530
COLLAPSE HYDRAULIC RATING (psi)	6390

QTY.	DESCRIPTION	PART NUMBER	MATERIAL
1	PIN ELEMENT	PAT-5000-030	1026
1	BOX ELEMENT	PAT-5000-031	1026
1	TOP SWAGE	PAT-5000-034	4130 / 4140 / 4142
1	BOTTOM SWAGE	PAT-5000-035	4130 / 4140 / 4142
N+1	O-RING	OOO-V569-153	VITON
N+1	O-RING	OOO-V569-154	VITON
1	72K SHEAR STUD	PAT-4500-038	4140 / 4142
1	SET SCREW 1/4 INCH X 20 TPI, 5/16 INCH	PUR-0501-030	ALLOY
1	10 FT. SECTION	PAT-5000-037	1018 / 1026
1	SLEEVE NUT	SET-3250-120	4140 / 4130
1	SLEEVE LOCK NUT	SET-3250-121	4140 / 4130
1	SETTING SLEEVE ASSEMBLY	SET-3250-126	NOTED
1	QUICK CHANGE ROD	SET-3250-130	4130 / 4140
1	QUICK CHANGE NUT	SET-3250-131	4130 / 4140
1	LOCK NUT	SET-3500-025	1213 / 1215
1	TOP ADAPTER ROD	SET-3250-132	4130 / 4140
N+1	ROD TANDEM CONNECTOR	SET-3250-133	4130 / 4140
N	10 FT. ROD	SET-3250-134	4130 / 4140
OPT	5 FT. ROD	SET-3250-135	4130 / 4140
1	BOTTOM ROD EXTENDED	SET-3250-136L	4130 / 4140
1	COLLET ASSEMBLY	SET-3250-144	NOTED
1	COLLET BODY	SET-3250-145	4130 / 4140
1	END SUB	SET-3250-139	4140 / 4142
1	COLLET SUPPORT	SET-3250-140	4140
1	BOTTOM ADAPTER	SET-3250-031	4140
N	ROD SUPPORT	SET-3250-142	ALUMINIUM

MINIMUM EQUIPMENT REQUIRED FOR 10 FT. SYSTEM

EXTENSION SPECIFICATIONS:

PAT-5000-002, 5.0 INCH 15 PPF



PART NUMBER	LENGTH	OAL	WEIGHT	MATERIAL
PAT-5000-037	120	122.13	100.15	1018 / 1026
PAT-5000-038	60	62.13	50.04	1018 / 1026

PATCH TENSILE RATING	50,000 LBF.
----------------------	-------------

SYSTEM WEIGHTS:

	WEIGHT (LBS.)
PAT-5500-002	32.6
10 FT PATCH RUNNING WEIGHT	252.6
EA. ADDITIONAL 10 FT. LGTH ADD	173.3

SETTING TOOL OPTIONS:

	HYDRAULIC		WEIGHT (LBS)
3-1/8 INCH HYDARULIC	SET-3125-010		300
3-1/4 INCH MULTISTAGE SETTING TOOL INTERNALLY STROKED (HYDRAULIC)	SET-3250-410		287
	SCREEN SUB	TT0798-288A	
	CIRCULATION SUB	SET-2875-010	
	DUMP SUB	OT0710-288B-000	

	PYROTECHNIC		WEIGHT (LBS)
3-1/4 INCH MULTISTAGE SETTING TOOL	SET-3250-000		206
3-1/4 INCH MULTISTAGE SETTING TOOL INTERNALLY STROKED	SET-3250-400		200
	POWER CHARGE	OPC-3250-000-MS	
	IGNITER	DET-5306-074	
		DET-5306-008	