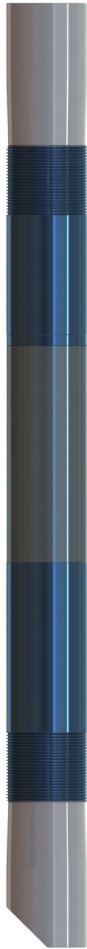


TECHNICAL INFORMATION:

PAT-5500-001, 5.5 INCH 23 PPF



CASING O.D. (in)	5.5
CASING WT. (lb/ft)	23
CASING I.D. (in)	4.670
PATCH MAX. RUNNING O.D. (in)	4.520
PATCH I.D. AFTER SETTING (in)	4.000
PATCH DRIFT I.D. (in)	3.875
BURST HYDRAULIC RATING (psi)	4530
COLLAPSE HYDRAULIC RATING (psi)	4880

QTY.	DESCRIPTION	PART NUMBER	MATERIAL
	X-SPAN SYSTEM	PAT-5500-001	NOTED
1	PIN ELEMENT	PAT-5500-020	1018 / 1026
1	BOX ELEMENT	PAT-5500-021	1018 / 1026
1	TOP SWAGE	PAT-5500-024	4130 / 4140 / 4142
1	BOTTOM SWAGE	PAT-5500-025	4130 / 4140 / 4142
1	O-RING	OOO-V569-155	VITON
1	O-RING	OOO-V569-156	VITON
1	72K SHEAR STUD	PAT-4500-038	4140 / 4142
1	10-FT SECTION	PAT-5500-037	1018 / 1026
	5 FT SECTION	PAT-5500-038	1018 / 1026

MINIMUM EQUIPMENT REQUIRED FOR A FULL SYSTEM CONSISTS OF ONE SHORT ASSEMBLY AND ONE SECTION.

PRODUCT OFFERINGS:

The Owen X-SPAN® System is an economical, proven, durable and dependable sealing system for the isolation of perforations, splits, corrosion or leaks in all types of tubulars and conditions. This system can utilize a multitude of deployment methods in all types of well bores. The large bore assures easy passage of service tools including bridge plugs, drop balls, seal bore assemblies, logging tools and perforating systems. The minimal surface equipment required for deploying the patch and rig less intervention results in significant savings for the operator.

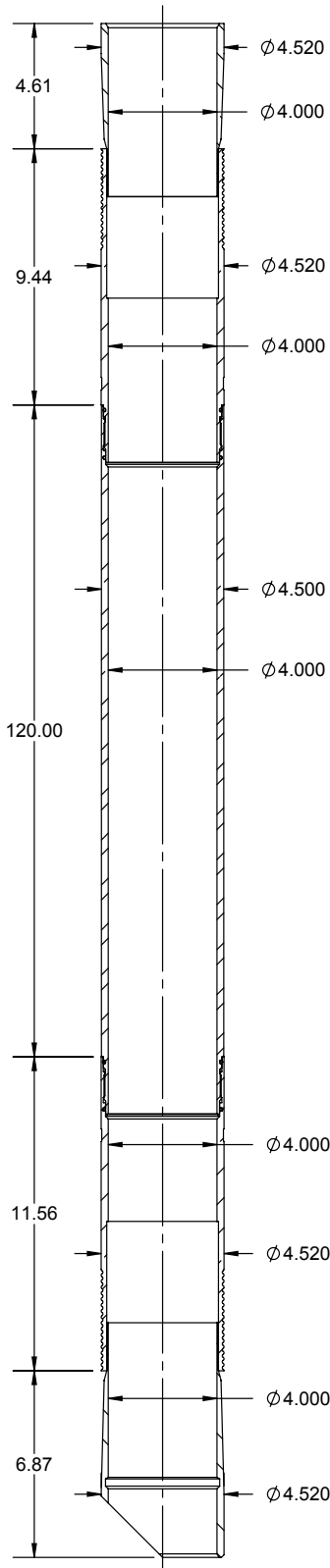
BENEFITS/CAPABILITIES:

The X-SPAN® System Offers:

- A proven, durable and dependable seal
- Deployment on electric wireline, tubing, drill pipe or coil tubing in vertical, deviated or horizontal or geothermal well bores
- An economical and reliable solution for a broad range of applications
- A large bore for easy passage of service tools
- Minimal surface equipment required for deployment

TECHNICAL INFORMATION:

PAT-5500-001, 5.5 INCH 23 PPF



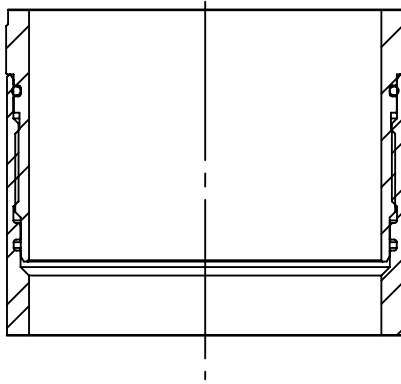
CASING O.D. (in)	5.5
CASING WT. (lb/ft)	23
CASING I.D. (in)	4.670
PATCH MAX. RUNNING O.D. (in)	4.520
PATCH I.D. AFTER SETTING (in)	4.000
PATCH DRIFT I.D. (in)	3.875
BURST HYDRAULIC RATING (psi)	4530
COLLAPSE HYDRAULIC RATING (psi)	4880

QTY.	DESCRIPTION	PART NUMBER	MATERIAL
1	PIN ELEMENT	PAT-5500-020	1018 / 1026
1	BOX ELEMENT	PAT-5500-021	1018 / 1026
1	TOP SWAGE	PAT-5500-024	4130 / 4140 / 4142
1	BOTTOM SWAGE	PAT-5500-025	4130 / 4140 / 4142
N+1	O-RING	OOO-V569-155	VITON
N+1	O-RING	OOO-V569-156	VITON
1	72K SHEAR STUD	PAT-4500-038	4140 / 4142
1	SET SCREW 1/4 INCH X 20 TPI, 5/16 INCH	PUR-0501-030	ALLOY
1	10-FT SECTION	PAT-5500-037	1018 / 1026
1	SLEEVE NUT	SET-3250-120	4130 / 4140
1	SLEEVE LOCK NUT	SET-3250-121	4130 / 4140
1	SETTING SLEEVE ASSY	SET-3250-148	NOTED
1	QUICK CHANGE ROD	SET-3250-130	4130 / 4140
1	QUICK CHANGE NUT	SET-3250-131	4130 / 4140
1	TOP ADAPTER ROD	SET-3250-132	4130 / 4140
N+1	ROD TANDEM CONNECTOR	SET-3250-133	4130 / 4140
N	10 FT. ROD	SET-3250-134	4130 / 4140
OPT	5 FT. ROD	SET-3250-135	4130 / 4140
1	BOTTOM ROD EXTENDED	SET-3250-136L	4130 / 4140
1	COLLET ASSEMBLY	SET-3250-154	NOTED
1	END SUB	SET-3250-156	4130 / 4140
1	COLLET BODY	SET-3250-155	4140
1	COLLET SUPPORT	SET-3250-157	4130 / 4140 / 4142
N	ROD SUPPORT	SET-3250-160	ALUMINIUM

MINIMUM EQUIPMENT REQUIRED FOR 10 FT. SYSTEM

EXTENSION SPECIFICATIONS:

PAT-5500-001, 5.5 INCH 23 PPF



PART NUMBER	LENGTH	OAL	WEIGHT	MATERIAL
PAT-5500-037	120	122.13	111.34	1018 / 1026
PAT-5500-038	60	62.13	55.63	1018 / 1026

PATCH TENSILE RATING	53,000 LBF.
----------------------	-------------

SYSTEM WEIGHTS:

	WEIGHT (LBS.)
PAT-5500-001	26.7
10 FT PATCH RUNNING WEIGHT	246.76
EA. ADDITIONAL 10 FT. LGTH ADD	173.3

SETTING TOOL OPTIONS:

HYDRAULIC			WEIGHT (LBS)
3-1/8 INCH HYDARULIC	SET-3125-010		300
3-1/4 INCH MULTISTAGE SETTING TOOL INTERNALLY STROKED (HYDRAULIC)	SET-3250-410		287
	SCREEN SUB	TT0798-288A	
	CIRCULATION SUB	SET-2875-010	
	DUMP SUB	OT0710-288B-000	

PYROTECHNIC			WEIGHT (LBS)
3-1/4 INCH MULTISTAGE SETTING TOOL	SET-3250-000		206
3-1/4 INCH MULTISTAGE SETTING TOOL INTERNALLY STROKED	SET-3250-400		200
	POWER CHARGE	OPC-3250-000-MS	
	IGNITER	DET-5306-074	
		DET-5306-008	