



# X-SPAN System®

## Tubing - Casing Suspension System

### SST-5500-0170-1001, 5.5 INCH 17 PPF

#### TECHNICAL INFORMATION:



CASING O.D. (in)	5.5
CASING WT. (lb/ft)	17
CASING I.D. (in)	4.892
MAX. RUNNING O.D. (in)	4.700
I.D. AFTER SETTING (in)	3.125
DRIFT I.D. (in)	3.000
MAXIMUM LOAD (lbf.)	47,000

QTY.	DESCRIPTION	PART NUMBER	MATERIAL
	SUSPENSION SYSTEM	SST-5500-0170-1001	NOTED
1	PIN ELEMENT	PAT-5500-040	1018 / 1026
1	TOP SWAGE	PAT-5500-034	4130/4140/4142
1	PROFILE SUB	SST-5500-0230-0615	4140-4142
1	72K SHEAR STUD	PAT-4500-038	4140/4142
1	O-RING	OOO-V569-156	VITON
2	O-RING	OOO-V569-155	VITON

MINIMUM REQUIRED EQUIPMENT

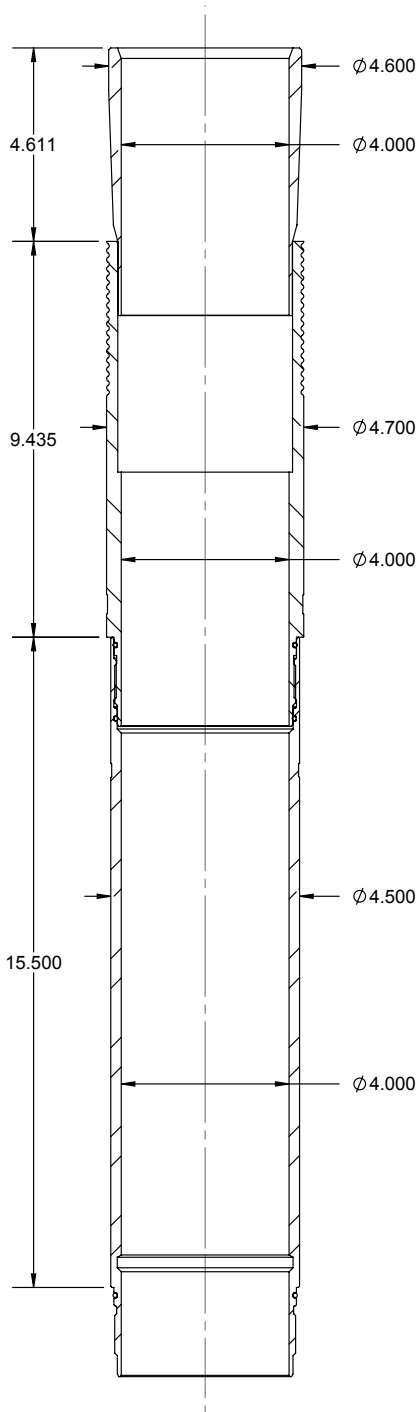
#### PRODUCT OFFERINGS:

The suspension X-SPAN® allows for long lengths of tubulars to be suspended below the sealing element, it also gives a large ID after setting which is a big advantage when it comes to production restrictions and subsequent wellbore accessibility. This system can be customized to fit an assortment of tools and is easily deployed with our conventional hydraulic or pyrotechnic setting equipment.

#### BENEFITS/CAPABILITIES:

- Increased I.D. over conventional hanger systems
- Multiple crossover connection options and applications
- The system has excellent suspension load capabilities
- X-SPAN® suspension systems can be engineered to include:
  - Liners
  - Sand Control Screens
  - Velocity String
  - Profile Nipples
  - Sliding Sleeves which are just a few of the applications

#### TECHNICAL INFORMATION:



CASING O.D. (in)	5.5
CASING WT. (lb/ft)	17
CASING I.D. (in)	4.892
MAX. RUNNING O.D. (in)	4.700
I.D. AFTER SETTING (in)	4.000
DRIFT I.D. (in)	3.875
MAXIMUM LOAD (lbf.)	47,000

QTY.	DESCRIPTION	PART NUMBER	MATERIAL
1	PIN ELEMENT	PAT-5500-040	1018 / 1026
1	TOP SWAGE	PAT-5500-034	4130/4140/4142
1	PROFILE SUB	SST-5500-0230-0615	4140-4142
2	O-RING	OOO-V569-155	VITON
1	O-RING	OOO-V569-156	VITON
1	SET SCREW 1/4 INCH X 20 TPI, 5/16 INCH	PUR-0501-030	ALLOY
1	72K SHEAR STUD	PAT-4500-038	4140/4142
1	SLEEVE NUT	SET-3250-120	4140/4130
1	SLEEVE LOCK NUT	SET-3250-121	4140/4130
1	SETTING SLEEVE ASSY	SET-3250-148	NOTED
	BLANK SLEEVE	SET-3250-150	1018/1026
	BOTTOM GUIDE	SET-3250-151	1018/1026
	BLANK NUT	SET-3250-149	4130/4140
1	QUICK CHANGE ROD	SET-3250-130	4130/4140
1	QUICK CHANGE NUT	SET-3250-131	4130/4140
1	TOP ADAPTER ROD	SET-3250-132	4130/4140
1	ROD TANDEM CONNECTOR	SET-3250-133	4140/4130
1	BOTTOM ROD EXTENDED	SET-3250-136L	4140/4130
1	COLLET ASSEMBLY	SET-3250-154	NOTED
	END SUB	SET-3250-156	4130/4140
	COLLET BODY	SET-3250-155	4140
1	COLLET SUPPORT	SET-3250-157	4130/4140/4142

MINIMUM EQUIPMENT REQUIRED

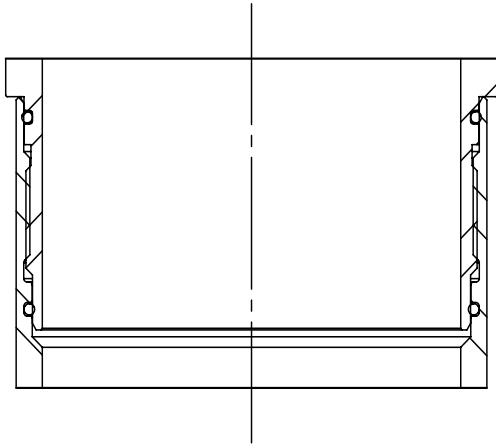


# X-SPAN System®

## Tubing - Casing Suspension System

### SST-5500-0170-1001, 5.5 INCH 17 PPF

#### SECTION SPECIFICATIONS:



PART NUMBER	WEIGHT (LBS.)	MATERIAL
PAT-5500-040	11.69	1018 - 1026
TENSILE RATING		53,000 LBF

#### SYSTEM WEIGHTS

	WEIGHT (LBS.)
SST-5500-0170-1001	31

#### SETTING TOOL OPTIONS:

HYDRAULIC		WEIGHT (LBS)
3.125 INCH HYDRAULIC SETTING TOOL	SET-3125-010	300
	SCREEN SUB	TT0798-288A
	CIRCULATION SUB	SET-2875-010
	DUMP SUB	OT0710-288B-000

PYROTECHNIC		WEIGHT (LBS)
3.25 INCH MULTISTAGE SETTING TOOL	SET-3250-010	206
	BOTTOM ADAPTER	SET-3250-431