



Relative Permeability System - RPS 10 000



General Features

The equipment is composed of:

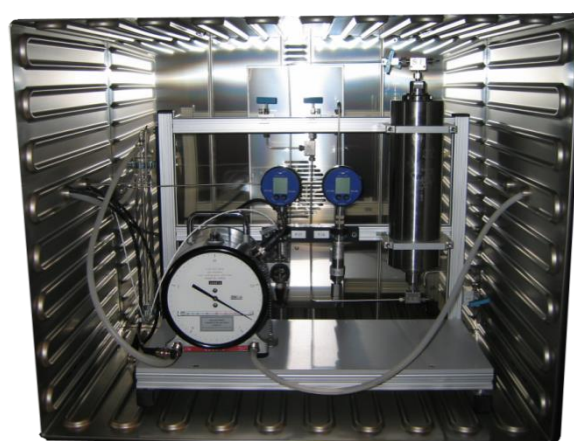
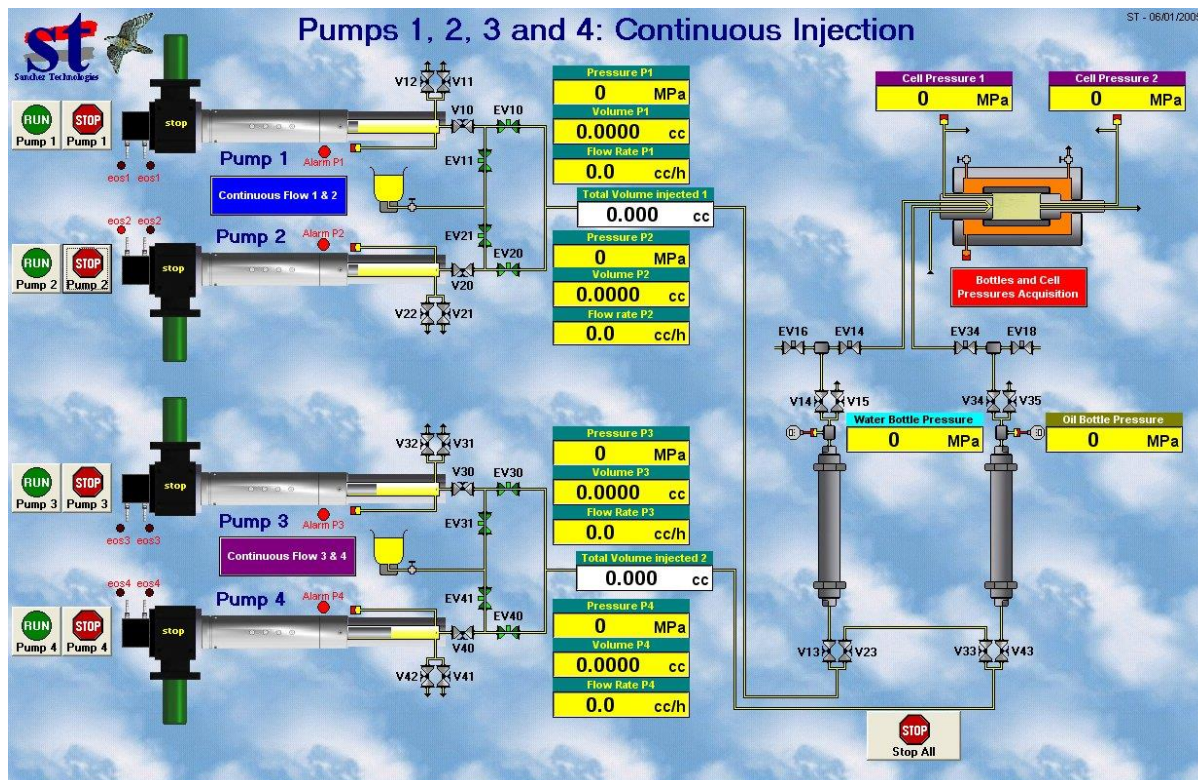
- 3 bottles containing oil/water and gas connected to 2 double continuous injection
- A tri-axial core holder cell
- A three phases separator
- 2 collecting pumps for oil and water production
- 3 double circulating pumps for steady or unsteady state measurement
- A double pump for overburden pressure

Specifications	
Working Temperature	150°C
Working Pressure	0 to 700 bar (10 000 psi)
Measuring Pressure Point	3 for inlet and 1 for outlet
Type of Injection	Axial
Double Pump Volume	2 x 300 ml
Double Pump Volume Accuracy	0.0001 ml



Relative Permeability System - RPS 10 000

The synoptic enables to display parameters, to carry out the displacement controls of the pumps and to plot graphic of RPS parameters. It controls all the parameters displayed on the electrical cabinets. This equipment uses our software for data acquisition and displacement pump control; Falcon.



Non contractual pictures and data