



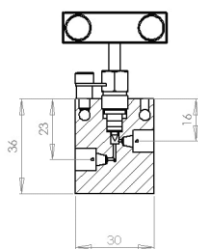
VMP 15000



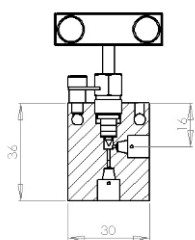
Specifications	
Working Pressure	From 0 to 1000 bar (15 000 psi)
HP Tubing Ø (outside)	1/8" or 1/16"
Fluids	For liquids and gas
Maximum Working Temp.	185 °C
Sealing	Metal/Metal
Particularities	Rotating Stem
	Delivered with ferrules and gland nuts

Why choosing ST Manual Valves?

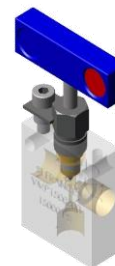
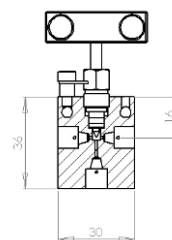
- No play between stem and handle
- Available upon request in different materials adapted to corrosive fluids and / or special temperature
- Available with high-safety olives
- High Pressure connection by mounted olives



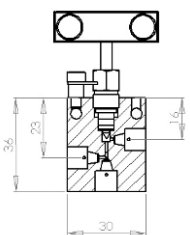
Model 1



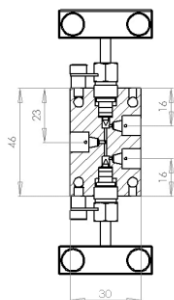
Model 2



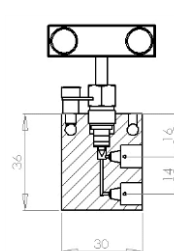
Model 3



Model 4



Model 5



Model 6



VMP 15000

Item	Designation	ST references	Spare Parts
1	Body Model 1	VMP1500101	
1	Body Model 2	VMP1500201	
1	Body Model 3	VMP1500301	
1	Body Model 4	VMP1500401	
1	Body Model 5	VMP1500501	
1	Body Model 6	VMP1500601	
2	Bottom Ring	VMP1500102	
3	Gasket	VMP1500103	
4	Stuffing Box	VMP1500104	
5	Stem	VMP1500105	
6	Driving Screw	VMP1500106	
7	Stuffing Box Screw	VMP1500107	
8	Handle	VMP1500108	
9	Spacer Ring	VMP1500109	
10	Break	VMP1500110	
11	CHC M4 x 12 screw	CHM0412I	
12	HC M5 x 10 long round headed screw	HCM0510I	
13	Nut	HM02I	

Working Pressure	HP Tubing Outside Ø	Inside Ø (in mm)	Type	Weight (in gr)	Dimensions (in mm)	ST References
15000 psi (1000 bar)	1/8"	1	Model 1	130	69 x 40 x 12	VMP150010
		1	Model 2	130	69 x 40 x 12	VMP150020
		1	Model 3	140	69 x 40 x 12	VMP150030
		1	Model 4	140	69 x 40 x 12	VMP150040
		1	Model 5	175	110 x 40 x 12	VMP150050
		1	Model 6	150	69 x 40 x 12	VMP150060
	1/16"	1	Model 1	130	69 x 40 x 12	VMP150011
		1	Model 2	130	69 x 40 x 12	VMP150021
		1	Model 3	140	69 x 40 x 12	VMP150031
		1	Model 4	140	69 x 40 x 12	VMP150041
		1	Model 5	175	110 x 40 x 12	VMP150051
		1	Model 6	150	69 x 40 x 12	VMP150061