



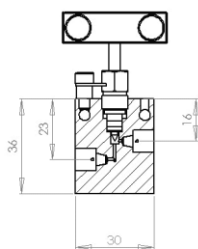
## VMP 20000



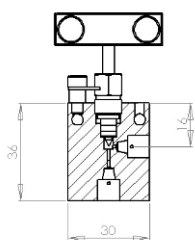
Specifications	
Working Pressure	From 0 to 1500 bar (20 000 psi)
HP Tubing Ø (outside)	1/4"
Fluids	For liquids and gas
Maximum Working Temp.	185 °C
Sealing	Metal/Metal
Particularities	Rotating Stem
	Delivered with ferrules and gland nuts

### Why choosing ST Manual Valves?

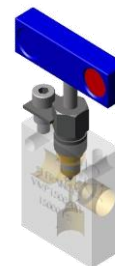
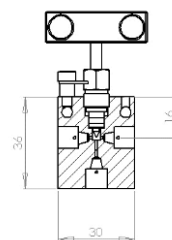
- No play between stem and handle
- Available upon request in different materials adapted to corrosive fluids and / or special temperature
- Available with high-safety olives
- High Pressure connection by mounted olives



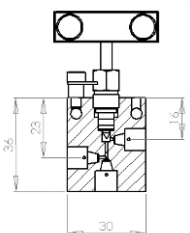
Model 1



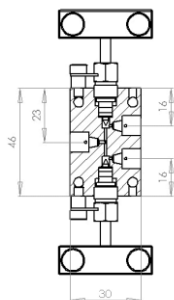
Model 2



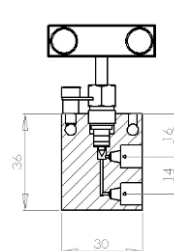
Model 3



Model 4



Model 5



Model 6



## VMP 20000

Item	Designation	ST references	Spare Parts
1	Body Model 1	VMP2000101	
1	Body Model 2	VMP2000201	
1	Body Model 3	VMP2000301	
1	Body Model 4	VMP2000401	
1	Body Model 5	VMP2000501	
1	Body Model 6	VMP2000601	
2	Bottom Ring	VMP2000102	
3	Teflon O-ring	VMP2000112	
4	Gasket	VMP2000103	
5	Stem	VMP2000105	
6	Driving Screw	VMP2000106	
7	Stuffing Box Screw	VMP2000107	
8	Handle	VMP2000108	
9	Washer	VMP2000111	
10	Stuffing Box	VMP2000104	
11	CHC M4 x 12 screw	CHM0412I	
12	HC M5 x 06 screw	HCM0506I	
13	HC M05x06 Screw	HCM0506I-T	
14	Nut	HM03I	

Working Pressure	HP Tubing Outside Ø	Inside Ø (in mm)	Type	Weight (in gr)	Dimensions (in mm)	ST References
20 000 psi (1500 bar)	1/4"	1	Model 1	130	69 x 40 x 12	VMP200010
		1	Model 2	130	69 x 40 x 12	VMP200020
		1	Model 3	140	69 x 40 x 12	VMP200030
		1	Model 4	140	69 x 40 x 12	VMP200040
		1	Model 5	175	110 x 40 x 12	VMP200050
		1	Model 6	150	69 x 40 x 12	VMP200060