



General Features

The equipment is composed of one press 1000 KN (100 t) in a climatic air bath where temperature and humidity are controlled and one pump enabling to generate jack pressure.
The equipment is controlled by electric cabinet or by FALCON® software.

Pump Press Specifications	
Working Pressure	250 bar
Volume	1000 ml
Temperature	Ambient
Flow Rate	2400 ml/h
Fluid	Demineralized water



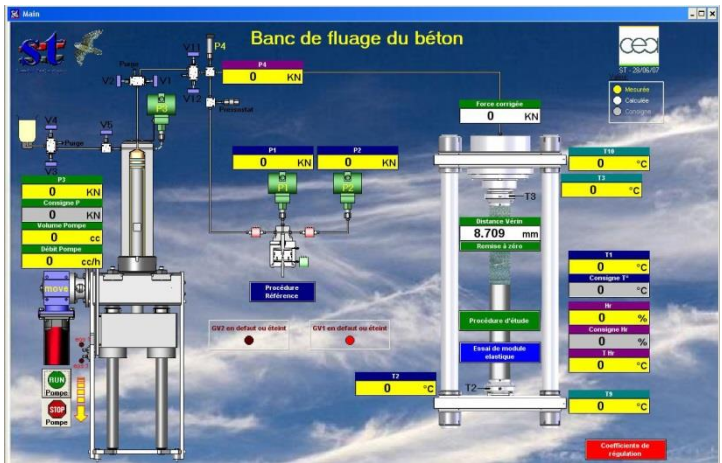
Compression Bench by

Functions of the equipment:

- Constant force rate
- Constant force according to T and HR% variation
- Force steps in function of time
- Temperature control
- Relative humidity control
- Graphics
- Data acquisition

Press Specifications	
Jack Pressure	250 bar
Force Equivalence	1000 kN
Sample Size	Ø 350 x 800 mm
Temperature	15 to 80°C
Hygrometry	10 to 97%

Example of synoptic



Pump



Press



Sanchez Technologies – Core Lab Manufacturing Group

ZAC des Epineaux 5 ave Louis Blériot CS60037 – 95740 Frépillon - FRANCE –
Tel: +33 1 30 40 20 50 - Email: Sanchez.Technologies@CoreLab.com – www.corelab.com