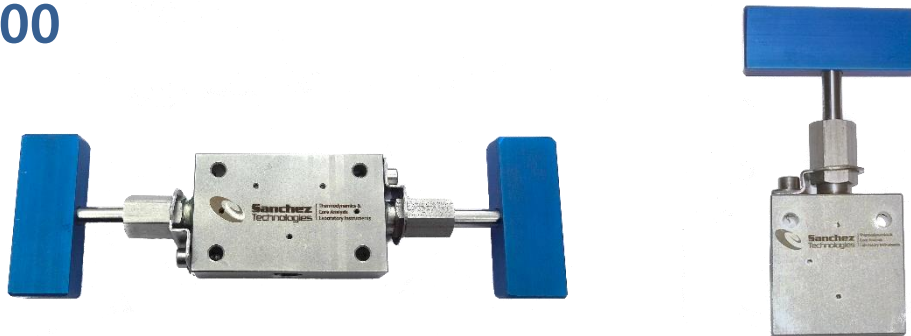


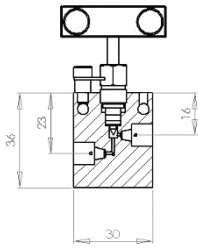
VMP 15000



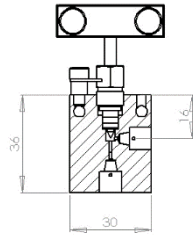
| Specifications | |
|------------------------------|--|
| Working Pressure | From 0 to 1000 bar (15 000 psi) |
| HP Tubing Ø (outside) | 1/8" or 1/16" |
| Fluids | For liquids and gas |
| Maximum Working Temp. | 185 °C |
| Sealing | Metal/Metal |
| Particularities | Rotating Stem |
| | Delivered with ferrules and gland nuts |

Why choosing ST Manual Valves?

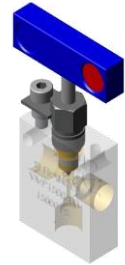
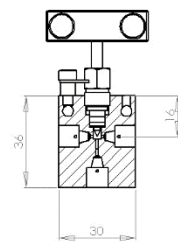
- No play between stem and handle
- Available upon request in different materials adapted to corrosive fluids and / or special temperature
- Available with high-safety olives
- High Pressure connection by mounted olives



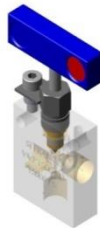
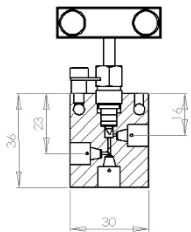
Model 1



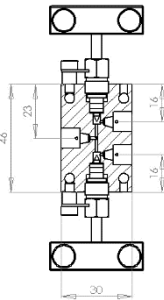
Model 2



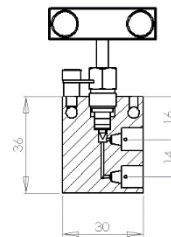
Model 3



Model 4



Model 5



Model 6

| Working Pressure | HP Tubing Outside Ø | Inside Ø (in mm) | Type | Weight (in gr) | Dimensions (in mm) | ST References |
|-----------------------------|---------------------|------------------|---------|----------------|--------------------|------------------|
| 15000 psi (1000 bar) | 1/8" | 1 | Model 1 | 130 | 69 x 40 x 12 | VMP150010 |
| | | 1 | Model 2 | 130 | 69 x 40 x 12 | VMP150020 |
| | | 1 | Model 3 | 140 | 69 x 40 x 12 | VMP150030 |
| | | 1 | Model 4 | 140 | 69 x 40 x 12 | VMP150040 |
| | | 1 | Model 5 | 175 | 110 x 40 x 12 | VMP150050 |
| | | 1 | Model 6 | 150 | 69 x 40 x 12 | VMP150060 |
| | 1/16" | 1 | Model 1 | 130 | 69 x 40 x 12 | VMP150011 |
| | | 1 | Model 2 | 130 | 69 x 40 x 12 | VMP150021 |
| | | 1 | Model 3 | 140 | 69 x 40 x 12 | VMP150031 |
| | | 1 | Model 4 | 140 | 69 x 40 x 12 | VMP150041 |
| | | 1 | Model 5 | 175 | 110 x 40 x 12 | VMP150051 |
| | | 1 | Model 6 | 150 | 69 x 40 x 12 | VMP150061 |