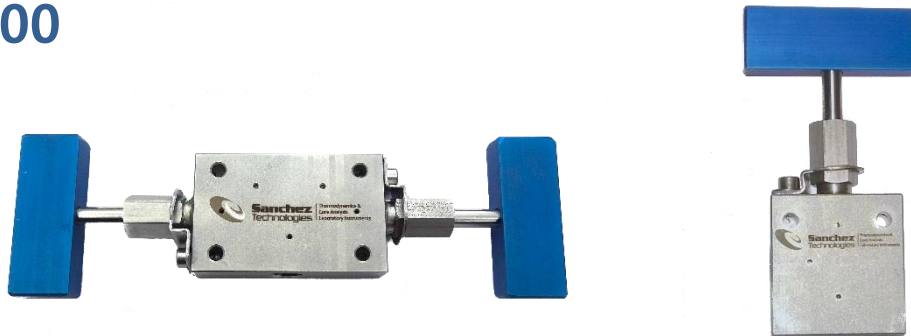


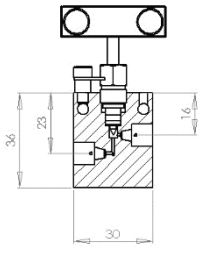
## VMP 20000



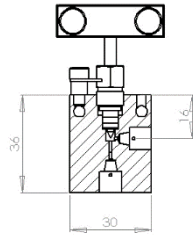
Specifications	
Working Pressure	From 0 to 1500 bar (20 000 psi)
HP Tubing Ø (outside)	1/4"
Fluids	For liquids and gas
Maximum Working Temp.	185 °C
Sealing	Metal/Metal
Particularities	Rotating Stem
	Delivered with ferrules and gland nuts

### Why choosing ST Manual Valves?

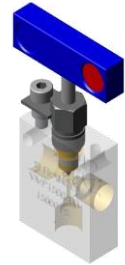
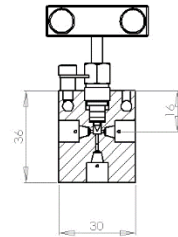
- No play between stem and handle
- Available upon request in different materials adapted to corrosive fluids and / or special temperature
- Available with high-safety olives
- High Pressure connection by mounted olives



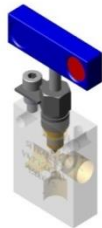
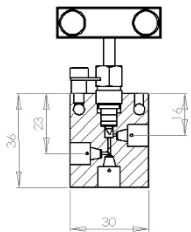
**Model 1**



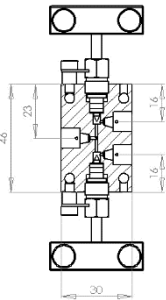
**Model 2**



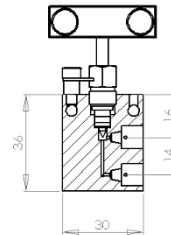
**Model 3**



**Model 4**



**Model 5**



**Model 6**

Working Pressure	HP Tubing Outside Ø	Inside Ø (in mm)	Type	Weight (in gr)	Dimensions (in mm)	ST References
<b>20000 psi (1500 bar)</b>	<b>1/4"</b>	1	Model 1	130	69 x 40 x 12	<b>VMP200010</b>
		1	Model 2	130	69 x 40 x 12	<b>VMP200020</b>
		1	Model 3	140	69 x 40 x 12	<b>VMP200030</b>
		1	Model 4	140	69 x 40 x 12	<b>VMP200040</b>
		1	Model 5	175	110 x 40 x 12	<b>VMP200050</b>
		1	Model 6	150	69 x 40 x 12	<b>VMP200060</b>