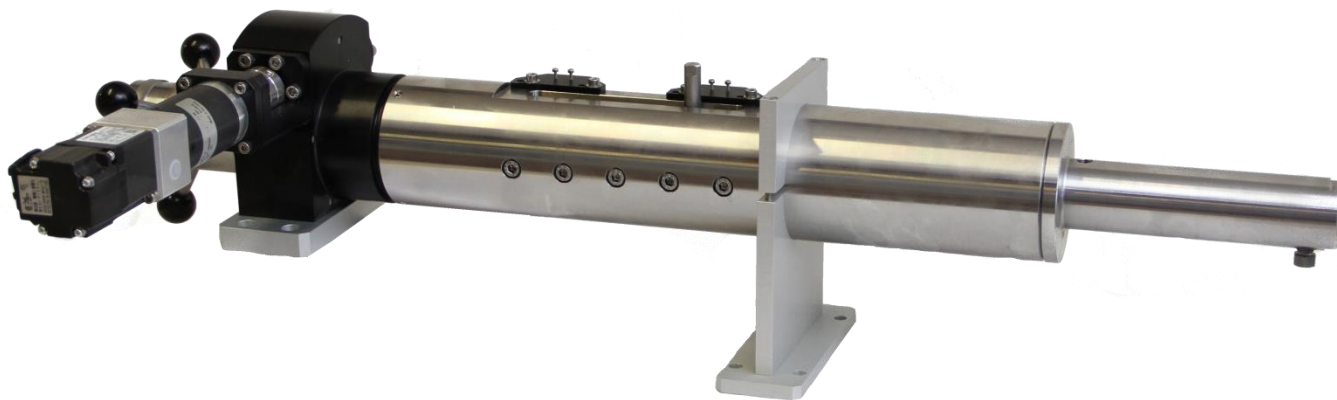


VPSSH 6-700 by



General Features

This equipment is specially designed to inject in small quantities and concentration lower than 4 ppm. The volume of the pump is 6 cc for accuracy of 10^{-6} cc.

With the synoptic or with the electric cabinet, the pump can be controlled (pressure regulation, constant flow rate, constant volume). Falcon® software also enables to see the values of the different parameters (pressure, volume...) and control pneumatic valves.

The pump can run the following operations:

- Constant flow
- Constant pressure
- Predefined volume at constant flow



Specifications	
Volume	6 ml
Pressure	700 bar
Temperature	Ambient
Flow Rate	15 cc/h
Volume Accuracy	10^{-6} ml
Pressure Accuracy	0.05% FS
Temperature Accuracy	0.01°C



The pump is composed of following elements:

- One chamber in stainless steel with packing
- One calibrated piston --
- One driving piston system (movements executed by a gear box with a --brushless motor and high accuracy absolute encoder)
- Absolute pressure sensor
- Safety manometer stainless steel (option)